



INFORMATION  
INTERNATIONAL sa

# The Monthly

issue number 194 | January 2024

[www.monthlymagazine.com](http://www.monthlymagazine.com)

Published by Information International



## THE PARLIAMENTARY COUNCIL'S SOCIAL SECURITY LAW OVERHAUL

### A NEW RETIREMENT AND SOCIAL PROTECTION SYSTEM

Lebanon's Postal Stamps from 1998 to 2022  
**63.8 Million Stamps**  
**Valued at USD 64 Million**

**The Rise of Civil Societies Amid  
Lebanon's Downturn**  
315 new Civil Society Organizations in 10  
months at an average of one CSO per day

# Index

194 | January 2024

## Leader

- 5** **The Parliamentary Council's Social Security Law Overhaul Introduces A New Retirement and Social Protection System**

## Public Sector

- 13** **Lebanon's Postal Stamps from 1998 to 2022**  
63.8 Million Stamps Valued at USD 64 Million

- 34** **Government state's Electricity expenses:**  
99% Used by Ministry of Telecommunications  
Electricity Expenditure at 4% of Total Government Expenses

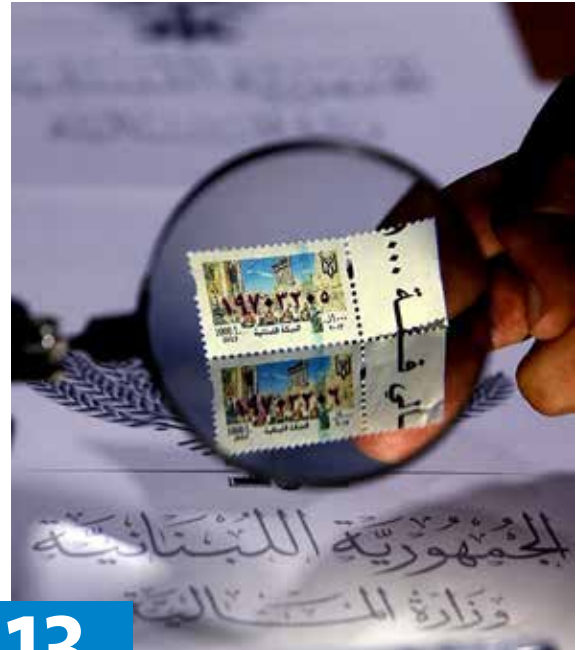
- 40** **The Hundredfold Surge:**  
A Comprehensive Analysis of the Increase  
in Overtime Wages  
and Customs Service Fees (2019-2023)

- 44** **The Rise of Civil Societies Amid Lebanon's Downturn**  
Three-hundred and fifteen new Civil Society  
Organizations in 10 months at an average of  
one CSO per day

- 48** **The Effect of Coffee: From Contemplation to Action & Benefits of Exercise on the Brain** by Dr. Mirna Sabra

- 50** **Discover Lebanon**  
**Zabbougha** in the Metn Region: It's Real

- 51** **Lebanon Families**  
**The Maronite and Shi'a Shabshoul Families**



13



40

Published by Information International, *The Monthly* deals with research, economic, financial, social and cultural issues that concern Lebanese citizens and officials. It also publishes periodic public opinion polls on the topics in question. You can subscribe to "The Monthly" magazine by calling: 01-983008



All rights © reserved  
License No. 180/2003



Information International S.A.L  
Al-Borj Building, 4th Floor Martyr's Square, Commercial Center  
Beirut - Lebanon, P.O.BOX: 11-4353 Beirut, Lebanon  
Tel: (961-1) 983008/9 Fax: (961-1) 980630  
E-mail: infointl@information-international.com  
Web: www.information-international.com  
Web: www.monthlymagazine.com



@infointl  
@MonthlyMagazine

# Nancy Ajram and the “Municipalities...”

By Jawad N. Adra

This article was published in the Monthly Magazine , Issue N80, 2010, which we found suitable and convenient nowadays with the growth of the Number of NGOs in Lebanon.

Who remembers? In the mid-nineties, individuals from the so-called “civil society” most of whom harbouring good intentions, a purpose and a strategy, organized a campaign called “my country, my hometown, my municipality”. Funding, of course, is from the west and the reason is change from the bottom-up. There is no discussion with those that have pure intentions. However, those who claim that they had a strategy and vision for change via civil societies- 12 years after the first post-civil war municipal elections- must now come forward to face a serious discussion.

My country: Divided horizontally and vertically between five heads, and sponsored by the Ta’ef and Doha agreements and jubilantly celebrated in the ceremony held at the Syrian Arab Republic’s Embassy in Beirut.

My hometown: No electricity, no sewage, no water, and pollution everywhere. No public schools, no preventive health care, a lack of awareness for rights and obligations and a municipal council that trudges on with impunity.

My Municipality: A miniature replica of the public sector and the Council of Ministers with every family in the village represented by one person, regardless of how ignorant he is, or where he points his moral compass. The head of the municipality controls all decisions. The saying goes: “The municipality is a president and a policeman.” The squandering of funds, outright theft, the construction of unnecessary infrastructure and the ambition of families to have their sons hired as municipal police officers

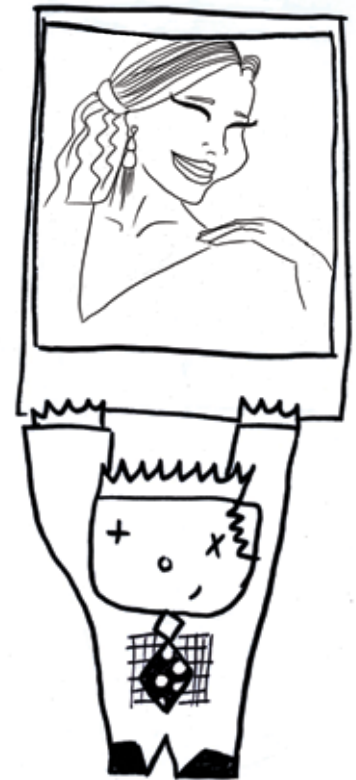
The solution? It is the dissolution of all the municipal councils and the implementation of the laid out and paid for schemes, plans and strategies including Lebanon’s urban and rural master plan and the strategies of social and economic development; holding elections after merging the municipalities to minimize their number to less than quarter of what they are now; allowing residents to vote in their place of residence rather than their place of birth; placing municipalities under the jurisdiction of the Court of Audit.

Considering that all of this is not on the horizon, it is therefore recommended to raise Nancy Ajram’s picture in the so-called “municipality palaces” and to start the day with her song “baladiyat...” literally meaning municipalities or from the same hometown. The lyrics are as follows:

“Very very good ... I am also naïve, I thank him, there is no one else to make my hours happy ...I ama part of him as he is also a part of me...he is also from the same home town...he is my “baladiyat”.”

As Nancy is the United Nations goodwill ambassador, we can here celebrate the so-called international legitimacy partnership between the private and public sectors and celebrate our success in raising marking Lebanon high up in the world of art and democracy.

A lie called civil society! Yes, “I am a part of him and he is also a part of me!” as Nancy says.



# Leader



# THE PARLIAMENTARY COUNCIL'S SOCIAL SECURITY LAW OVERHAUL

## A NEW RETIREMENT AND SOCIAL PROTECTION SYSTEM

In a legislative session held on December 14, 2023, the parliamentary council approved a law amending some provisions of the Social Security Law and establishing the retirement and social protection system. The discussion on this law has been going on for 20 years, making it the longest debate in the history of legislative projects in Lebanon. Information International published a summary of the final version of the law on its website and presents here details of the law and a comparison with the current law.

The law, as amended by Decree No. 13760, consists of 12 articles distributed over 56 pages. It amends some provisions of the Social Security Law and establishes the retirement and social protection system. The law was initially approved by the Cabinet in its session on December 9, 2004, and was referred to the parliamentary council on December 15, 2004. It was amended by the subcommittee of the joint parliamentary committees, and then by the joint parliamentary committees, receiving final approval on October 17, 2008. It was then returned to the parliamentary committees, which referred it to their respective subcommittee, remaining under discussion until its approval by the joint committees on November 29, 2023, and subsequently referred to the general assembly.

Initially, the law's name was amended to become the "Retirement, Disability, and Bereavement Law," and then the "Retirement Law" (i.e., pension schemes). The joint parliamentary committees approved the retirement pension law, aiming to convert end-of-service compensation for the insured into a retirement pension, and the parliamentary council approved it in its legislative session on December 14, 2023.

## What are the contents of this law?

### Establishment of the Retirement System

The law aims to establish a retirement system to replace the end-of-service compensation system. This new system is applied compulsorily to some workers, while the provisions of the end-of-service compensation system continue to apply, on a transitional basis, to other individuals, as will be explained when discussing mandatory and optional participation.

### What are the provisions of this system?

- 1- Retirement pension.
- 2- Disability pension.
- 3- Pension for the dependents of the insured.

### The New Retirement Pension

- 1- The pension is financed from contributions, benefits, social security revenues, and fees (details of financing will be mentioned in the summary).
- 2- The retirement pension has two guarantees to ensure it does not fall below the first minimum threshold and the second minimum threshold. The retirement pension will not be less than the better of the two guarantees:
  - a. For the insured who contributed for a full 15 years, a rate of 55% of the official minimum wage, as of the retirement date, with an additional 1.75% for each

additional year of contribution, reaching a maximum of 80% of the official minimum wage at the date of retirement.

- b. A rate of 1.33% of the average wages of the insured declared for each year of contribution up to 30 years, with a maximum limit. These rates can be adjusted by decree.
- 3- Annual reassessment of all due pensions based on the provisions of the retirement system must be conducted. The reassessment relies on the consumer price index (CPI) issued by the Central Statistical Administration.

### Individual Accounts

The hypothetical individual accumulated account for each of the insured consists of:

- Contributions paid or to be paid.
- Annual increase in line with the increase in the average income of the participants, i.e., the average declared salaries in social security.

### Mandatory Sectors:

Professions mandated by law to fall within the retirement system include the following:

- 1- Lebanese and foreign employees working under an employment contract for one or more Lebanese or foreign employers.

- 2- Permanent employees working in agricultural establishments.
- 3- Lebanese citizens working for the state, municipalities and any administration, public institution, or independent authority. Excluded from these provisions are sectors covered by special retirement laws different from those in the Social Security Law.
- 4- Educational staff in higher education institutions and technical institutes, unless they have their own mandatory retirement system.
- 5- Contracted employees in Lebanon with an institution that has a headquarters or branch in Lebanon, who started their work in Lebanon and were transferred to work abroad.
- 6- Employers.
- 7- Self-employed individuals.
- 8- Non-permanent agricultural workers according to a decree issued by the Cabinet upon the recommendation of the Fund's Board of Directors.

Any other category can be added by decrees issued by the Cabinet based on the recommendation of the Minister of Labor after the Board of Directors' termination. This means that this system does not include all insured individuals; for example, public transport drivers are not included unless they are allowed to join voluntarily by a subsequent decree.

## Foreign Workers

Foreign workers are not subject to the benefits unless they possess a work permit according to the applicable laws and regulations, provided that the country they belong to treats the Lebanese reciprocally regarding the pension system. Foreigners are not subject to this law if the employer proves that they receive similar benefits in the country where the contract is regulated or the country they belong to. This is an amendment to previous provisions that did not subject foreign workers unless they were beneficiaries.

## Optional Sectors

Professions NOT mandated by law to fall within the retirement system include the following:

- 1- Self-employed Lebanese citizens residing in Lebanon and working in the agricultural industry, including their workers, family assistants, employers, and non-permanent workers.

- 2- Lebanese permanent and non-permanent workers abroad who are not mandatorily subject to the system.
- 3- Insured individuals affiliated with the pension system who no longer meet the mandatory subscription conditions for any reason.

## How can optional participants, including those working abroad, subscribe?

The enrollee chooses a fixed income basis, i.e., the bracket on which they want to subscribe among the four income brackets, namely:

- 150% of the declared average wages for insurance.
- 200% of it.
- 300% of it.
- 400% of it.



## Mandatory subscription and optional retirement plans

Are current insured individuals mandatorily subscribed? Is there a right to choose between staying on the previous pension system's provisions and the supposed new system after the law is passed?

Mandatory subscription applies for:

- 1- Individuals entering employment for the first time after the system's implementation date.
- 2- Former insured individuals who have not reached the age of 49 by the system's implementation date.
- 3- Other insured individuals who have reached the age of 49 provided they have 15 years of subscription to the insurance, and the previous period is counted toward the system until reaching the retirement age. This means that currently working, insured individuals over the age of 49 at the system's approval date may choose to subscribe provided they fit the eligibility criteria.

## Optional Subscription

Insured individuals who do not meet either of these conditions have the right to choose one of these two situations:

- A. Remain under the end-of-service compensation system.
- B. Choose to join the pension system, irrevocably, within a one-year period from its implementation date, provided they have the remaining period to reach the retirement age, allowing them to receive the retirement pension for 15 years before reaching the age of 64. They must not be older than 49 years of age.

### Note:

***Upon enrollment, previous working years under the end-of-service compensation system are added to the pension system subscription period and transferred to the individual's virtual account. Enrollment in this optional system is authorized by a Cabinet decree following the Minister of Labor's proposal and Fund Board of Directors termination.***

## What are the elements of the retirement pension?

- 1- The accumulated virtual individual account.
- 2- The age of the insured.
- 3- The number of subscription years.
- 4- The factor for converting the accumulated virtual individual account into an annual retirement pension.

## Qualification Conditions for Retirement Pension

The insured is entitled to the retirement pension only when both of the following conditions are met:

- A. The insured has reached the legal retirement age set at 64 years.
- B. The insured has a subscription period of at least fifteen years.

In case either of these conditions is not met, the insured receives their compensation in a lump sum.

## Early Retirement

The insured who has not reached the age of 64 has the right to apply for early retirement in the following cases:

- Physical disability, determined at 50% of the insured's general capacity within six years before reaching the legal retirement age, i.e., when they are at least 58 years old.
- A subscription period of no less than 20 years, and a virtual individual account exceeding the maximum of the two guarantees within four years before reaching the legal retirement age, i.e., when the insured has reached at least 60, and they can receive a partial fixed compensation from their account, provided that the remaining amount in their account is sufficient for a retirement pension exceeding the maximum of the two guarantees. The retirement pension is reduced because the guarantees are reduced by half a percent for each month preceding the legal retirement age. For example, if they retire at the age of 62, 12% of the guarantees are reduced, making the minimum pension 43% of the minimum wage.



## Workers in physically demanding roles or with jobs unsuitable for extended service

Special conditions can be set for them by decree to enable them to benefit from a retirement pension without the requirement of reaching the age of 64.

### Disability Pension

It is a requirement to be a system participant for at least 3 years before the date of proving the incapacity status. If disabled due to a non-occupational accident or an unexpected illness, the subscription period is reduced to 12 months. The pension is calculated using the same calculation methods as for other insured individuals, except that in the absence of the subscription years requirement, the restricted amounts in their virtual individual account are settled, and a lump sum is paid to them.

### Pension for the Dependents of the Insured

The following individuals can be considered dependents of the insured:

- A. The spouse, provided that the marriage has been in place for two years, except in the presence of children from this marriage, in which case there is no minimum duration requirement.

- B. Legitimate or expected children within a 9-month period or adopted children for at least two years and who are dependent on the insured at the time of their death, up to the age of 18, extending to 25 for children currently studying, without specifying the age for children with special needs. In the absence of a spouse or children, the law does not include the parents in the retirement pension, even if they were the responsibility of the insured. Instead, they are eligible for a fixed compensation equal to the individual's account.

### Value of the Dependents' Pension

If the insured dies before receiving the pension, the pension equals the deceased's pension and is calculated in the same way. In the case of a deceased person receiving a pension, dependents receive 80% of their salary distributed equally between the spouse and children, i.e., 40% for the partner and 40% for the children. If one of them loses eligibility, the share goes to the remaining dependents. The pension is discontinued for the benefiting spouse or spouse if they remarry. The partner has the right to combine both the dependents' pension and their retirement pension.



## Funding Sources

The financing sources of the new retirement system consist of:

- a. Subscriptions.
- b. Returns on the investment of funds derived from these sources and their utilization.
- c. Amounts restricted in the virtual guaranteed account, including settlements that employers must settle in the transitional stage specified by the implementing decree.
- d. Delays, interest, and additional fines.
- e. Yearly state contribution, a percentage of total earnings for those under this system, as specified in the implementing decree and annually reviewed in the General Budget Law.
- f. Fees allocated to support the general account imposed by decrees adopted in the Cabinet.

## Subscriptions

Subscriptions are determined as a percentage of the total earnings of the stipulated worker, determined by decree, within a ceiling of four times the average wage (adjustable by decree). The percentage is not specified in the law but is included in Appendix 3. The adjustment and distribution between employers and workers are left to a later decree. The subscription amount is set at 16.5%, distributed between 10% or 13.5% for the employer and 3.5% or 6.5% for the worker.

## Investment Committee

The law abolished the financial committee and stipulated the establishment of an investment committee in its place, with a director appointed. The committee manages the fund's money through an apparatus chaired by the committee.



- The investment committee consists of 6 independent experts, in addition to the fund's general manager and executive investment director.
- Committee members must hold a university postgraduate degree, with the Civil Service Council overseeing the appointment process.
- The term of office for the committee president and members is set at six years, renewable once.

The following were defined:

- Executive management tasks for investment and heads of investment units in the executive investment management.
- Investment authorizations.
- External asset managers.
- Mechanisms for transferring assets allocated for investment.
- Granting the fund preferential ownership rights in public projects, as well as the provisions of external auditing.

## Board of Directors:

Initially, the number of board members was reduced from 26 to 14 representatives, including 8 experts, 4 for the state, and 2 for employers and workers, plus 6 others shared between workers and employers. The number of representatives in the House of Representatives' General Council was reduced to 10.

The Board of Directors' Office was abolished, and its powers were transferred to the Board of Directors.

## Temporal Considerations:

The 5-year period refers to the elapsed time for retirement, disability, and non-fulfilled death pensions.

## Review Committee:

The law established a committee to resolve financial and satisfaction-related disputes, chaired by a judge and consisting of members from the Board of Directors and a director from the fund.

**Table: Comparison Current Social Security Law vs. December 14, 2023, Retirement Law.**

Difference / Law	Current Social Security Law	New Retirement Law
Retirement Age for Full Compensation or Pension Entitlement	From 60 to 64 years	64 years
Compensation Payment Method	Lump sum paid once to the beneficiary or to rightful heirs after death	Monthly pension for the beneficiary or their successors after death
Percentage of Required Contributions for the Worker	0.00%	Between 3% and 6.5% (to be determined by decree)
Percentage of Required Contributions for the Employer	8.5%, plus the settlement value calculated upon liquidation of the compensation	Between 10 and 13.5%, distribution between the worker and the employer specified by decree
Percentage of Required Contributions for the State	0.00%	A percentage of the total earnings of those subject to this system, determined by decree, serving as a guarantee for this system as reflected in its annual budgets

Difference / Law	Current Social Security Law	New Retirement Law
Compensation/Pension Value	Last salary multiplied by years of service	An equation specified by decree, on condition that the amount is not less than one of the two following numbers: <b>1-</b> 55% of the official minimum wage for those having reached the age of 64 after 15 years of subscription. <b>2-</b> 1.33% of the average wages multiplied by years of service
Change in Compensation/Pension	The amount becomes fixed and does not undergo any changes upon compensation entitlement	The retirement pension adjusts annually based on minimum wage, declared average wages, and the consumer price index from the Central Statistics Administration. Pensions are reassessed on a specified date, with payments aligned to contributors' average income index.
Minimum Years of Contribution for Full Compensation Entitlement	20 years	15 years and having reached the age of 64
Minimum Compensation/Pension Threshold	No minimum threshold	Two guarantees for retirement pensions: <b>A)</b> For contributors with 15 years, 55% of official minimum wages, increasing by 1.75% per additional year, maxing at 80%. <b>B)</b> 1.33% of the contributor's yearly declared average wages.
Maximum Compensation/Pension	No maximum limit	Not exceeding four times the average declared wages
Beneficiaries After Death	Rightful heirs: Spouse, children, and dependents specified by law	Spouse or children up to the age of 18, extending to 25 for children dedicated to full-time education, with no specified age in the presence of children with special needs (80% of retirement benefits), and parents in the absence of heirs
When the Worker Moves Between Employers	Receives compensation for work with the last employer, and contributions paid to the previous employer are added	The pension is linked to all work periods regardless of changes in the employer
Penalty for Employer's Delay in Paying Contributions	0.1% for each day of delay	0.1% for each day of delay, plus an additional fine amounting to 3% of the total due contributions, within a maximum limit of 15% of these amounts

Source: *Information International*, based on Current Social Security law and the new one.

## Public Sector

# LEBANON'S POSTAL STAMPS FROM 1998 TO 2022

## 63.8 MILLION STAMPS VALUED AT USD 64 MILLION



The issue of postal stamps in Lebanon is quite comprehensive, not only for its material importance but also for what the inventory of postal stamps reveals from the year 1998 to 2023, if carried out as recommended here below. Lebanese can track the quantities of sold stamps and those required by the state. It would also shed light on how the process of reducing the state's share of commemorative stamps actually took place. Decisions by several ministers from 1998 to 2023 reduced the state's shares from a commemorative 75% to a regular 5%.

## Syria-Greater Lebanon Stamps, 1923

During the French occupation of Lebanon, under decision number 2139 issued on August 26, 1923, the French High Commissioner Maxime Weygand specified that the postage stamps to be used in Lebanon and Syria will be the stamps of the French Post and Telegraph Administration. In addition to their value, they were supplemented with Syrian piasters with the phrase Syrie-Grand Liban written in two lines on small stamps and in one line on large stamps.

On December 17, 1923, the French Commissioner issued decision 2342, which established a new system for postal and telegraph circles and transferred these circles to the Syrian Federation and the State of Greater Lebanon, according to decision number 50 issued on February 21, 1925, by the French Commissioner Maurice Sarrail.

The decision stipulated the commencement of selling postal stamps designated for clearance (payment of postal fees on mail) in the postal administrations of Syria and Greater Lebanon. This began on March 1, 1925, using the postal stamps designated for each administration among the aforementioned advanced postal administrations.

This series of stamps included the values mentioned below in Syrian piasters:

**0.10, 0.25, 0.50, 0.75, 1, 1.25, 1.50, 2, 2.50, 3, 5, 10, 25 piasters.**



## The Lebanese Republic, 1927

On May 21, 1927, Decision No. 1244 was issued, replacing the phrase Grand Liban (Greater Lebanon) with République Libanaise (Lebanese Republic) on postage stamps. Following the state's independence, Decree No. 126 of June 12, 1959, regulated the administrative and financial aspects of the General Directorate of Post and Telegraph.

The decree outlined the payment of fees for postal correspondence through postage stamps or alternative methods. It allowed the use of a stamp with the inscription "Paid" (p.p) by the post administration for clearance on periodicals issued in Lebanon. Additionally, special machine imprints in post offices, banks, companies, and commercial and industrial institutions could replace postage stamps for clearance.

Article 26 of the 1959 decree allowed the Lebanese Post Administration to issue commemorative postage stamps on occasions designated by the Cabinet. The provisions of Article 1 of Decree No. 9354 of April 28, 1962, determined the duration of sale for commemorative postage stamps and units (blocks) and the handling of remaining quantities after the specified selling period.

## LibanPost Since 1998

In 1998, the Lebanese government mandated postal monopoly through a contract signed on July 22, 1998, and an associated agreement. LibanPost commenced operations on October 21, 1998. Article 56 of the contract stipulated a 25% commission for the operator on all stamp and related goods sales, with amounts exceeding the commission transferred to the Ministry of Communications. The operator's share was only 25% for commemorative stamps, while the actual company's share was 95% for regular postage stamps. Revenue shares for the sale of commemorative and regular postage stamps were defined in the agreement between the Ministry of Communications and LibanPost and its amendments, approved by the Cabinet.

**Table 1: Revenue from postage stamps according to the contract between the Ministry of Communications and LibanPost and its amendments, approved by the Cabinet.**

Type of Stamps	Treasury Share of Sales	LibanPost Company Share of Sales
Commemorative Stamps	75%	25%
Regular Stamps	5%	95%

Source: *Information International*, based on decisions by the Council of Ministers concerning postage stamps.

## Minister of Telecommunications

Clause 12 of Cabinet Decision No. 10 issued on June 9, 1999 (Minutes No. 27), specifies the responsibility of LibanPost for certain postal services in Lebanon. This includes the production, distribution, and storage of postage stamps, as well as bearing the cost of issuance. These activities fall under the authority and oversight of the Minister, in accordance with Lebanese laws and regulations. The company executes the issuance decision by printing these stamps and delivering them for distribution and sale.

To monitor oversight, a team from the General Directorate of Post was assigned to inventory the quantities of commemorative stamps sold and remaining, handed over to LibanPost and authorized for issuance on designated occasions. Based on this, Decision No. 17/1 was issued on January 17, 2019, forming a team within the General Directorate of Post with the aforementioned tasks. This was implemented six months after the date of issuance.

The team is required to organize a detailed report on the results, paving the way for completing procedures related to putting the remaining quantities into circulation as regular postage stamps for clearance on postal items, categorized by denomination.

## From Commemorative Stamps to Regular Ones

In 2023, the Ministry of Telecommunications proposed to the Cabinet the issuance of a commemorative postage stamp titled "Beirut, Capital of Arab Media 2023." The Minister, by decree, would be authorized to specify the number, denomination, form, and specifications of these stamps. The printed quantity would be sold to collectors within six months from the date of issuance, and a special committee of employees from the General Directorate of Post would be responsible for making inventory of the remaining quantities after this period.

After the specified period, these commemorative stamps would be put into circulation as regular postage stamps, sold for clearance on postal items, categorized by denomination. This would be done according to instructions issued by the Minister of Telecommunications. While the Cabinet approved the proposal, the decision to put these stamps into circulation had not been issued to date.

This leads to the conclusion that the expiration of the six-month period without selling the commemorative stamps would necessitate their transformation into regular postage stamps. This means that the state treasury would lose 70% of its share of sales for these stamps, decreasing from 75% to only 5%.

Was it advisable to leave them as commemorative stamps for a longer period than six months from the date of circulation, especially considering that it is within the authority of the administration and the advisory stamp committee to determine the selling duration and how to handle the remaining quantity?

#### Stamps in Circulation, 1998-2023

From 1998 to 2023, successive Ministers of Telecommunications issued 306 decisions regarding the issuance and circulation of stamps, including 165 releases for regular stamps and 141 releases for commemorative stamps. The total value of these stamps amounted to around 96 billion Lebanese pounds, with a total quantity of 63,859,850 stamps.

**Table 2: Distribution of Issued and Circulated Stamps 1998-2023.**

Type of Stamp	Number of Issues	Number of Stamps	Value
Commemorative	141	15,210,000	24,018,750,000
Regular	165	48,649,850	72,028,362,500
<b>Total</b>	<b>306</b>	<b>63,859,850</b>	<b>96,047,112,500</b>

Source: *Information International*, based on decisions by Ministers of Telecommunications published in the Official Gazette.

**Table 3: Stamp Issuance Decisions: Ministerial Distribution and Tenure Duration.**

Minister	Number of Commemorative and Regular Stamps	Value (Lebanese Pounds)	Number of Regular Issues in Circulation	Number of Commemorative Issues in Circulation	Total Number of Issues in Circulation	Number of Days in Office as Minister of Communications
Issam Naaman	3,080,000	4,455,000,000	8	0	8	692
Jean-Louis Qordahi	18,480,000	21,719,500,000	22	27	49	1636
Alain Tabourian	-	-	-	-	-	91
Marwan Hamadeh	14,560,000	16,365,000,000	9	26	35	1088
Gebran Bassil	2,680,000	3,780,000,000	0	22	22	486
Charbel Nahhas	11,585,000	24,537,750,000	18	9	27	581
Nicolas Sehnaoui	7,289,850	9,878,612,500	12	11	23	978
Butros Harb	1,845,000	2,923,750,000	41	23	64	1037
Jamal Jarrah	1,930,000	5,325,000,000	23	14	37	774
Mohammed Shqeir	440,000	675,000,000	9	4	13	355



Minister	Number of Commemorative and Regular Stamps	Value (Lebanese Pounds)	Number of Regular Issues in Circulation	Number of Commemorative Issues in Circulation	Total Number of Issues in Circulation	Number of Days in Office as Minister of Communications
Talal Hawat	1,140,000	3,247,500,000	13	4	17	598
Johnny Al-Korm	830,000	3,140,000,000	10	1	11	812 (until 1/12/2023) and currently a Minister in the Caretaker Government
<b>Total</b>	<b>63,859,850</b>	<b>96,047,112,500</b>	<b>165</b>	<b>141</b>	<b>306</b>	<b>9,128</b>

Source: *Information International*, based on officially published decisions by the mentioned ministers.

## Financial Denominations for these Stamps

Each postage stamp has a financial denomination that determines its selling value, ranging from 100 Lebanese pounds to 30,000.

**Table 4: Regular and Commemorative Postage Stamps: Categories, Quantities, and Values 1998-2023.**

Denomination (in LBP)	Quantity	Value (in LBP)
100	4,445,000	444,500,000
250	3,309,950	827,487,500
300	4,045,000	1,213,500,000



Denomination (in LBP)	Quantity	Value (in LBP)
500	7,099,950	3,549,975,000
750	1,935,000	1,451,250,000
1,000	8,140,000	8,140,000,000
1,100	2,920,000	3,212,000,000
1,250	2,765,000	3,456,250,000
1,400	4,240,000	5,936,000,000
1,500	4,675,000	7,012,500,000
1,750	5,660,000	9,905,000,000
2,000	5,859,950	11,719,900,000
2,250	1,385,000	3,116,250,000
2,500	195,000	487,500,000
2,750	1,220,000	3,355,000,000
3,000	2,220,000	6,660,000,000
4,000	40,000	160,000,000
4,500	20,000	90,000,000
5,000	2,300,000	11,500,000,000
6,000	110,000	660,000,000
10,000	1,255,000	12,550,000,000
30,000	20,000	600,000,000
<b>Total</b>	<b>63,859,850</b>	<b>96,047,112,500</b>

Source: *Information International*, based on officially published decisions by the mentioned ministers.



This file, having demonstrated its financial significance, requires attention and exploration on multiple levels. This is particularly crucial in enhancing the inventory committees responsible for auditing stamps, aiming to determine the quantities sold and those due to the state. Additionally, it informs ministers that the repercussions of their decisions to convert stamps from commemorative to regular will inevitably result in reducing the state's share from 75% to 5%. Moreover, it emphasizes the necessity for the Court of Audit to be informed of this context to propose possible measures for controlling the receipt and delivery of stamps, especially considering that the company using them is the same one responsible for printing.

**Table 5. Number and value of commemorative stamps converted to regular stamps 1998-2022.**

Minister	Number of Converted Issues	Number of Converted Stamps	Value of Converted Stamps	Percentage (of Value)
Issam Naaman	-	-	-	0.0%
Jean-Louis Qordahi	10	2,111,951	2,302,671,300	10.6%
Alain Tabourian	0	-	-	0.0%
Marwan Hamadeh	43	6,279,628	11,077,809,850	50.8%
Gebran Bassil	18	1,934,050	2,909,578,800	13.3%
Charbel Nahhas	4	471,031	376,151,750	1.7%
Nicolas Sahnaoui	13	2,094,104	3,455,706,000	15.8%
Butros Harb	10	205,679	239,248,900	1.1%
Jamal Jarrah	27	672,113	1,115,817,500	5.1%
Mohammad Shqeir	2	62,306	108,204,250	0.5%
Talal Hawat	5	75,874	108,414,750	0.5%
Johnny Al-Korm	4	76,061	121,677,500	0.6%
<b>Total</b>	<b>136</b>	<b>13,982,797</b>	<b>21,815,280,600</b>	<b>100.0%</b>

Source: *Information International*, based on officially published decisions issued by the mentioned ministers



## What are the Topics Covered by Postage Stamps?

Table 6. Stamp details, including type (commemorative or regular), name, financial category, quantity, issuance date, and issuing minister's name.

Subject	Date (DD/MM/YYYY)	Type	Denomination (in LBP)	Quantity	Value (in LBP)	Minister
Michel Chiha	08/11/2022	Regular	30000	20000	600,000,000	Johny Al-Korm
St. Joseph Institute - Aintura	26/9/2022	Commemorative	10000	10000	100,000,000	Johny Al-Korm
Hotel Dieu Du France Hospital - Saint Joseph University	12/09/2022	Regular	10000	10000	100,000,000	Johny Al-Korm
Lebanon Unites for Autism	11/04/2022	Regular	10000	30000	300,000,000	Johny Al-Korm
Alphabet Day	08/03/2022	Regular	10000	30000	300,000,000	Johny Al-Korm
Abu Melhem and Um Melhem	29/11/2021	Regular	1000	50000	50,000,000	Johny Al-Korm
Rashid Nakhle	15/11/2021	Regular	1750	40000	70,000,000	Johny Al-Korm
Wadih Sabra	15/11/2021	Regular	1750	40000	70,000,000	Johny Al-Korm
Mediterranean Artistic Jewelry - Euromed 2021	24/08/2021	Regular	2250	200000	450,000,000	Johny Al-Korm
Rahbani Brothers	14/06/2021	Regular	500	200000	100,000,000	Johny Al-Korm
Salwa Rawda Shqeir	31/05/2021	Regular	5000	200000	1,000,000,000	Johny Al-Korm
Earth Day	21/04/2021	Regular	2000	250000	500,000,000	Talal Hawat
25 Years of Establishing ESA Business School	08/04/2021	Regular	2000	30000	60,000,000	Talal Hawat
Qanoubine Patriarchs' Park	17/03/2021	Regular	10000	150000	1,500,000,000	Talal Hawat
Broumana High School	17/12/2020	Regular	1000	150000	150,000,000	Talal Hawat
Arab Economic and Social Development Summit	12/11/2020	Commemorative	2000	30000	60,000,000	Talal Hawat
75 Years of Founding the Arab League	12/11/2020	Commemorative	500	30000	15,000,000	Talal Hawat
75 Years of Establishing the United Nations	06/10/2020	Regular	2250	30000	67,500,000	Talal Hawat
Rebuilding Our City Together	02/10/2020	Regular	10000	30000	300,000,000	Talal Hawat
Patriarch Elias Howayek	14/09/2020	Commemorative	2000	50000	100,000,000	Talal Hawat
Centenary of Greater Lebanon	21/08/2020	Commemorative	1000	50000	50,000,000	Talal Hawat
Euromed 2020 - Traditional Dishes of the Mediterranean (Leb)	16/07/2020	Regular	1000	50000	50,000,000	Talal Hawat
75 Years of Founding the Lebanese Red Cross	24/06/2020	Regular	1000	50000	50,000,000	Talal Hawat
The writer Georges Shehadeh	24/06/2020	Regular	500	30000	15,000,000	Talal Hawat

Subject	Date (DD/MM/YYYY)	Type	Denomination (in LBP)	Quantity	Value (in LBP)	Minister
Amin al-Rihani	24/06/2020	Regular	500	30000	15,000,000	Talal Hawat
Thanks and Support for the Efforts of the Medical Body to Combat Covid-19	24/06/2020	Regular	2000	30000	60,000,000	Talal Hawat
Michel Eddé	24/06/2020	Regular	500	30000	15,000,000	Talal Hawat
250 Years since the Birth of Beethoven	25/02/2020	Regular	2000	120000	240,000,000	Talal Hawat
150 Years Anniversary of the National Evangelical Church in Beirut	15/10/2019	Commemorative	1000	30000	30,000,000	Mohammad Shqeir
125th Jubilee of Frères du Sacré-Coeur School - Jemayze	09/10/2019	Commemorative	1000	30000	30,000,000	Mohammad Shqeir
Arab Unified Postal Stamp for 2019	13/09/2019	Regular	2250	50000	112,500,000	Mohammad Shqeir
150th Birth Anniversary of Mahatma Gandhi	13/09/2019	Commemorative	1000	30000	30,000,000	Mohammad Shqeir
20th Anniversary of the International Express Mail Cooperative	12/07/2019	Regular	2000	30000	60,000,000	Mohammad Shqeir
Common Postal Stamp for Euromed Mediterranean Fashion "Men"	04/07/2019	Regular	2000	15000	30,000,000	Mohammad Shqeir
Common Postal Stamp for Euromed Mediterranean Fashion "Women"	04/07/2019	Regular	2000	15000	30,000,000	Mohammad Shqeir
Centenary of the Court of Cassation	03/06/2019	Commemorative	2250	30000	67,500,000	Mohammad Shqeir
World Migratory Bird Day (Hoopoe)	07/05/2019	Regular	2250	30000	67,500,000	Mohammad Shqeir
World Migratory Bird Day (White Stork)	07/05/2019	Regular	2250	30000	67,500,000	Mohammad Shqeir
World Migratory Bird Day (Blue-cheeked Bee-eater)	07/05/2019	Regular	2250	30000	67,500,000	Mohammad Shqeir
Waste Management	04/04/2019	Regular	500	90000	45,000,000	Mohammad Shqeir
Mother's Day 2019	08/03/2019	Regular	1250	30000	37,500,000	Mohammad Shqeir
President Sami Solh	07/12/2018	Commemorative	1250	30000	37,500,000	Jamal Jarrah
75th Independence Day	26/10/2018	Regular	10000	100000	1,000,000,000	Jamal Jarrah
Late Writer Emily Nasrallah	20/08/2018	Commemorative	1250	30000	37,500,000	Jamal Jarrah
50th Anniversary of Dr. Ghaleb Shahin	18/07/2018	Regular	500	30000	15,000,000	Jamal Jarrah
Common Postal Stamp for Euromed Mediterranean Houses 2018	04/07/2018	Regular	2250	50000	112,500,000	Jamal Jarrah

Subject	Date (DD/MM/YYYY)	Type	Denomination (in LBP)	Quantity	Value (in LBP)	Minister
Patriarch Cardinal Nasrallah Sfeir	21/06/2018	Commemorative	2000	50000	100,000,000	Jamal Jarrah
25 Years since the Appointment of Riad Salameh as Governor of BDL	21/06/2018	Regular	5000	50000	250,000,000	Jamal Jarrah
2018 FIFA World Cup Matches	11/06/2018	Regular	1250	30000	37,500,000	Jamal Jarrah
2018 FIFA World Cup Matches	11/06/2018	Regular	2250	30000	67,500,000	Jamal Jarrah
Traffic Safety	25/04/2018	Regular	2000	30000	60,000,000	Jamal Jarrah
Our Lady of Mantara - Maghdouche	25/04/2018	Regular	1750	50000	87,500,000	Jamal Jarrah
Sunset	18/04/2018	Regular	2000	50000	100,000,000	Jamal Jarrah
President Rashid Solh	12/03/2018	Regular	250	150000	37,500,000	Jamal Jarrah
50th Anniversary of Dr. Ghaleb Shahin	12/03/2018	Regular	500	30000	15,000,000	Jamal Jarrah
Lebanese Artist Mahmoud Kahil	05/03/2018	Regular	2000	50000	100,000,000	Jamal Jarrah
Martyr Minister Mohammad Bahaeddine Ehsan Shatah	16/02/2018	Commemorative	250	50000	12,500,000	Jamal Jarrah
Spread Your Love Everywhere	31/01/2018	Regular	2000	30000	60,000,000	Jamal Jarrah
Lebanese Designer Elie Saab	22/01/2018	Regular	2000	100000		Jamal Jarrah
Beit El Shaab	29/11/2017	Commemorative	5000	50000	250,000,000	Jamal Jarrah
Commemorating the Election of President Michel Aoun	29/11/2017	Commemorative	5000	50000	250,000,000	Jamal Jarrah
Anniversary of the Return of the Flag to Beit El Shaab 1989-2016	29/11/2017	Commemorative	5000	50000	250,000,000	Jamal Jarrah
Caritas Lebanon	23/10/2017	Regular	2000	30000	60,000,000	Jamal Jarrah
90th Birth Anniversary of Nasri Shamseddine	09/10/2017	Commemorative	250	50000	12,500,000	Jamal Jarrah
Late Great Naji Al-Balbaki, Former Head of the Press Syndicate	09/10/2017	Commemorative	2000	50000	100,000,000	Jamal Jarrah
Mrs. Zalfa Chamoun	07/08/2017	Commemorative	2000	30000	60,000,000	Jamal Jarrah
Mr. Carlos Ghosn	02/08/2017	Commemorative	2000	50000	100,000,000	Jamal Jarrah
72nd Anniversary of the Lebanese Army	31/07/2017	Commemorative	2000	100000	200,000,000	Jamal Jarrah
Lebanese Writer Mikhael N'aimy	17/07/2017	Commemorative	250	50000	12,500,000	Jamal Jarrah
Common Postal Stamp for Euromed - Trees of the Mediterranean	04/07/2017	Regular	2250	100000	225,000,000	Jamal Jarrah

Subject	Date (DD/MM/YYYY)	Type	Denomination (in LBP)	Quantity	Value (in LBP)	Minister
World Music Day	12/06/2017	Regular	250	100000	25,000,000	Jamal Jarrah
Dar Al-Aytam Al-Islamiya	01/06/2017	Regular	2000	30000	60,000,000	Jamal Jarrah
National Museum	11/05/2017	Regular	2000	30000	60,000,000	Jamal Jarrah
Sursock Museum	11/05/2017	Regular	2000	30000	60,000,000	Jamal Jarrah
Mim Museum	11/05/2017	Regular	2000	30000	60,000,000	Jamal Jarrah
International Women's Day	22/03/2017	Regular	10000	100000	1,000,000,000	Jamal Jarrah
30th Anniversary of the Polio Eradication Program	10/01/2017	Commemorative	2000	30000	60,000,000	Jamal Jarrah
End of the Year 2016	27/12/2016	Regular	5000	30000	150,000,000	Jamal Jarrah
Zaki Nassif	26/10/2016	Regular	2,000	30000	60,000,000	Butros Harb
Prince Majid Erslan	14/10/2016	Commemorative	250	15000	3,750,000	Butros Harb
150th Anniversary of the American University of Beirut	14/10/2016	Commemorative	2,000	30000	60,000,000	Butros Harb
Pierre Gemayel	14/10/2016	Commemorative	250	15000	3,750,000	Butros Harb
Habib Abu Shahla	14/10/2016	Commemorative	250	15000	3,750,000	Butros Harb
Hamid Frangieh	14/10/2016	Commemorative	250	15000	3,750,000	Butros Harb
President Sa'eb Salam	14/10/2016	Commemorative	250	15000	3,750,000	Butros Harb
President Sabri Hammad	14/10/2016	Commemorative	250	15000	3,750,000	Butros Harb
President Abdul Hamid Karami	14/10/2016	Commemorative	250	15000	3,750,000	Butros Harb
Rashid Beydoun	14/10/2016	Commemorative	250	15000	3,750,000	Butros Harb
Saadi Al Manla	14/10/2016	Commemorative	250	15000	3,750,000	Butros Harb
Salim Taqla	14/10/2016	Commemorative	250	15000	3,750,000	Butros Harb
Adnan Al Hakeem	14/10/2016	Commemorative	250	15000	3,750,000	Butros Harb
President Camille Chamoun	14/10/2016	Commemorative	250	15000	3,750,000	Butros Harb
Maroun Kanaan	14/10/2016	Commemorative	250	15000	3,750,000	Butros Harb
Mohamed Al Fadl	14/10/2016	Commemorative	250	15000	3,750,000	Butros Harb
Henri Far'aon	14/10/2016	Commemorative	250	15000	3,750,000	Butros Harb
Unified Arab Stamp in Green	13/10/2016	Commemorative	10,000	15000	150,000,000	Butros Harb
Unified Arab Stamp in Blue	13/10/2016	Commemorative	10,000	15000	150,000,000	Butros Harb
40th Anniversary of the Founding of the Institute and University of Wisdom	13/10/2016	Commemorative	2,000	30000	60,000,000	Butros Harb
70 Years since Lebanon joined the Universal Postal Union	05/10/2016	Regular	2,000	30000	60,000,000	Butros Harb
Lebanese Olympic Stamp	20/07/2016	Regular	250	100000	25,000,000	Butros Harb

Subject	Date (DD/MM/YYYY)	Type	Denomination (in LBP)	Quantity	Value (in LBP)	Minister
Artist Eli Snaifer	20/07/2016	Regular	250	30000	7,500,000	Butros Harb
60th Anniversary of the Baalbek Festivals	11/07/2016	Regular	2,250	30000	67,500,000	Butros Harb
Common Postal Stamp for Euromed "Mediterranean Sea Fish 2016"	11/07/2016	Regular	2,000	30000	60,000,000	Butros Harb
Labor Day	27/04/2016	Regular	2,000	30000	60,000,000	Butros Harb
100 Years since the Martyrs of May 6	27/04/2016	Regular	2,000	30000	60,000,000	Butros Harb
Municipality of Deir Al-Qamar	29/03/2016	Regular	250	30000	7,500,000	Butros Harb
Jawad Bulus	16/02/2016	Regular	2,000	30000	60,000,000	Butros Harb
Hani Fahs	16/02/2016	Regular	2,000	30000	60,000,000	Butros Harb
End of the Year 2015	28/12/2015	Regular	2,000	30000	60,000,000	Butros Harb
Lebanese Flag Day	20/11/2015	Regular	2,000	30000	60,000,000	Butros Harb
20 Years since the Passing of the Visual Artist Saliba Al-Douwayhi	04/08/2015	Commemorative	2,000	30000	60,000,000	Butros Harb
President Riad Al-Solh	14/07/2015	Commemorative	1,750	30000	52,500,000	Butros Harb
President Beshara El Khoury	14/07/2015	Commemorative	1,750	30000	52,500,000	Butros Harb
Joint Postal Stamp for Euromed "Mediterranean Boats" 2015	06/07/2015	Regular	5,000	30000	150,000,000	Butros Harb
Writer Leila Ossayran	30/06/2015	Regular	1,750	30000	52,500,000	Butros Harb
President Amin Al-Hafez	30/06/2015	Regular	1,750	30000	52,500,000	Butros Harb
Lebanese General Security	03/06/2015	Regular	1,750	30000	52,500,000	Butros Harb
50 Years of Journalistic Giving for Painter Pierre Saadek	22/05/2015	Regular	2,250	30000	67,500,000	Butros Harb
Mother's Day	16/03/2015	Regular	2,000	30000	60,000,000	Butros Harb
Internal Security Forces Day	11/03/2015	Regular	1,750	30000	52,500,000	Butros Harb
Founder of Dar Al-Sayyad Sa'id Freiha	19/01/2015	Regular	1,750	30000	52,500,000	Butros Harb
Third Centennial Jubilee of the Monastery of Al-Mukhales in Jounieh - Sidon	26/12/2014	Regular	250	50000	12,500,000	Butros Harb
Monastery of Mar Qobrianos and Justina Kfifan	26/12/2014	Regular	250	50000	12,500,000	Butros Harb
Monastery of Mar Yuhanna Al-Qalaa in Beit Mery	26/12/2014	Regular	250	50000	12,500,000	Butros Harb
New Year	15/12/2014	Regular	5,000	30000	150,000,000	Butros Harb
Independence Day	24/11/2014	Regular	2,750	30000	82,500,000	Butros Harb



Subject	Date (DD/MM/YYYY)	Type	Denomination (in LBP)	Quantity	Value (in LBP)	Minister
917-1976 Martyr Kamal Youssef Al-Hajj	31/10/2014	Regular	1,750	30000	52,500,000	Butros Harb
Poet Ounsi El-Hajj	31/10/2014	Regular	1,750	30000	52,500,000	Butros Harb
Poet Joseph Harb	31/10/2014	Regular	1,750	30000	52,500,000	Butros Harb
Lebanese Hero Yusuf Bek Karam	31/10/2014	Commemorative	1,750	30000	52,500,000	Butros Harb
Foundation of the Melkite Missionaries Archbishop Germanus Mu'akad	02/09/2014	Regular	250	50000	12,500,000	Butros Harb
2014 World Cup Matches	09/07/2014	Regular	1,750	30000	52,500,000	Butros Harb
Mediterranean Sea Stamp 2014	08/07/2014	Regular	1,000	20000	20,000,000	Butros Harb
2014 World Cup Matches	08/07/2014	Regular	2,000	30000	60,000,000	Butros Harb
Father's Day	16/06/2014	Regular	1,750	30000	52,500,000	Butros Harb
Alexandra Issa El-Khoury	15/05/2014	Regular	2,000	30000	60,000,000	Butros Harb
Anissa Najjar	15/05/2014	Regular	2,000	30000	60,000,000	Butros Harb
Laure Mughazel	15/05/2014	Regular	2,000	30000	60,000,000	Butros Harb
50th Anniversary of the Establishment of the Central Bank of Lebanon	15/05/2014	Regular	1,750	30000	52,500,000	Butros Harb
Munira Al-Solh Hamadeh	15/05/2014	Regular	2,000	30000	60,000,000	Butros Harb
Statue of the Martyrs of the Armenian Genocide in 1915	14/04/2014	Regular	2,000	50000	100,000,000	Butros Harb
100th Anniversary of the Establishment of Three Colleges at Saint Joseph University	14/04/2014	Regular	500	50000	25,000,000	Butros Harb
Santa Claus	12/12/2013	Regular	2,000	20000	40,000,000	Nicolas Sehnaoui
Election of Writer Amin Al-Maalouf as a Member of the French Academy	12/11/2013	Commemorative	100	50000	5,000,000	Nicolas Sehnaoui
LibanPost Day	06/11/2013	Regular	3,000	20000	60,000,000	Nicolas Sehnaoui
Mother's Day	18/03/2013	Regular	2,000	14950	29,900,000	Nicolas Sehnaoui
Centenary of Sa'id Aqel	21/12/2012	Commemorative	500	50000	25,000,000	Nicolas Sehnaoui
Lebanese Center for Dialogue of Civilizations Stamp	12/12/2012	Regular	250	14950	3,737,500	Nicolas Sehnaoui
The Expatriate	20/11/2012	Regular	500	14950	7,475,000	Nicolas Sehnaoui
15 Years Since the Passing of Former Parliament Speaker Adel Assiran	20/11/2012	Commemorative	1,000	45000	45,000,000	Nicolas Sehnaoui

Subject	Date (DD/MM/YYYY)	Type	Denomination (in LBP)	Quantity	Value (in LBP)	Minister
50 Years Since the Establishment of the National Scientific Research Council	20/11/2012	Commemorative	250	45000	11,250,000	Nicolas Sehnaoui
Memorial of the Late Professor Ghassan Tueni	16/11/2012	Commemorative	750	50000	37,500,000	Nicolas Sehnaoui
Santa Claus	12/11/2012	Regular	2,000	50000	100,000,000	Nicolas Sehnaoui
Beirut Marathon	09/11/2012	Regular	750	45000	33,750,000	Nicolas Sehnaoui
Visit of Pope Benedict XVI to Lebanon	03/09/2012	Commemorative	1,250	50000	62,500,000	Nicolas Sehnaoui
60th Anniversary of the Establishment of the First Lions Club in Lebanon	22/03/2012	Commemorative	750	50000	37,500,000	Nicolas Sehnaoui
Mother's Day	03/03/2012	Regular	2,000	10000	20,000,000	Nicolas Sehnaoui
Official Portrait of His Excellency the President of the Lebanese Republic, General Michel Suleiman	03/11/2011	Commemorative	750	195000	146,250,000	Nicolas Sehnaoui
Summer Residence of the Presidential Palace in Beit Ed-Dine	03/11/2011	Commemorative	1,750	195000	341,250,000	Nicolas Sehnaoui
Lebanon's Election as a Non-Permanent Member of the UN Security Council 2010-2011	03/11/2011	Commemorative	2,750	195000	536,250,000	Nicolas Sehnaoui
Launching Diplomatic Relations between Lebanon and Syria	03/11/2011	Commemorative	2,500	195000	487,500,000	Nicolas Sehnaoui
Mr. Wadih Al-Safi	27/06/2011	Regular	2,000	1495000	2,990,000,000	Nicolas Sehnaoui
Mrs. Fairuz	27/06/2011	Regular	1,500	1495000	2,242,500,000	Nicolas Sehnaoui
Former Lebanese President Suleiman Franjeh	27/06/2011	Regular	1,000	1495000	1,495,000,000	Nicolas Sehnaoui
Ehden Reserve Forest	27/06/2011	Regular	750	1495000	1,121,250,000	Nicolas Sehnaoui
The Basbous Brothers	19/05/2011	Regular	5,000	495000	2,475,000,000	Charbel Nahhas
Mrs. Sabah	19/05/2011	Regular	1,750	995000	1,741,250,000	Charbel Nahhas
Poet Sa'id Aqel	19/05/2011	Regular	10,000	395000	3,950,000,000	Charbel Nahhas
Permanent Arab Postal Committee	19/05/2011	Regular	500	495000	247,500,000	Charbel Nahhas
Actor Hassan Alaa Al-Din	19/05/2011	Regular	2,750	995000	2,736,250,000	Charbel Nahhas
Actor Nabil Abu Al-Hessen	19/05/2011	Regular	2,250	745000	1,676,250,000	Charbel Nahhas
Folk Dance Troupe	19/05/2011	Regular	3,000	1495000	4,485,000,000	Charbel Nahhas
Lebanon: The Alphabet Composer	19/05/2011	Regular	250	745000	186,250,000	Charbel Nahhas
Imam Al-Ozaai	29/09/2010	Commemorative	1,000	195000	195,000,000	Charbel Nahhas

Subject	Date (DD/MM/YYYY)	Type	Denomination (in LBP)	Quantity	Value (in LBP)	Minister
Imam Musa Al-Sadr	29/09/2010	Commemorative	1,400	145000	203,000,000	Charbel Nahhas
President Bachir Gemayel	29/09/2010	Commemorative	1,400	145000	203,000,000	Charbel Nahhas
President Rashid Karami	29/09/2010	Commemorative	1,400	145000	203,000,000	Charbel Nahhas
President Rene Moawad	29/09/2010	Commemorative	1,400	145000	203,000,000	Charbel Nahhas
Tourism: An Open Door for Women	29/09/2010	Commemorative	2,000	295000	590,000,000	Charbel Nahhas
Mr. Taoukji	29/09/2010	Commemorative	3,000	15000	45,000,000	Charbel Nahhas
Martyr Kamal Jumblatt	29/09/2010	Commemorative	1,400	145000	203,000,000	Charbel Nahhas
Mufti Hassan Khaled	29/09/2010	Commemorative	1,400	145000	203,000,000	Charbel Nahhas
Old Lebanese Houses	28/07/2010	Regular	500	795000	397,500,000	Charbel Nahhas
Old Lebanese Houses	28/07/2010	Regular	1,000	495000	495,000,000	Charbel Nahhas
Old Lebanese Houses	28/07/2010	Regular	1,250	195000	243,750,000	Charbel Nahhas
Environment	28/07/2010	Regular	300	295000	88,500,000	Charbel Nahhas
Lebanese Army	28/07/2010	Regular	1,750	195000	341,250,000	Charbel Nahhas
Lebanese Crafts	28/07/2010	Regular	1,400	695000	973,000,000	Charbel Nahhas
Civil Defense - Paramedics	28/07/2010	Regular	250	195000	48,750,000	Charbel Nahhas
Civil Defense - Firefighters	28/07/2010	Regular	100	395000	39,500,000	Charbel Nahhas
Hazards of Smoking	28/07/2010	Regular	2,000	195000	390,000,000	Charbel Nahhas
Anti-Drug Campaign	28/07/2010	Regular	5,000	395000	1,975,000,000	Charbel Nahhas
Centennial of the French Secular Mission in Lebanon	02/09/2009	Commemorative	500	150000	75,000,000	Gebran Bassil
Jerusalem, the Capital of Arab Culture 2009	02/09/2009	Commemorative	1,000	50000	50,000,000	Gebran Bassil
Beirut, the World Capital of the Book for 2009	02/09/2009	Commemorative	750	100000	75,000,000	Gebran Bassil
Francophone Games - Beirut 2009	02/09/2009	Commemorative	1,000	200000	200,000,000	Gebran Bassil
Commemorating the Memory of Dr. Charles Malek	24/12/2008	Commemorative	2,000	200000	400,000,000	Gebran Bassil
Commemorating the Memory of General Francois El-Hajj	24/12/2008	Commemorative	1,750	200000	350,000,000	Gebran Bassil
Joint Issue Reflecting Friendly Lebanese-French Relations	24/11/2008	Commemorative	1,750	200000	350,000,000	Gebran Bassil
Anniversary of the Establishment of LibanPost and its Commitment to Postal Services in Lebanon	24/11/2008	Commemorative	1,250	50000	62,500,000	Gebran Bassil

Subject	Date (DD/MM/YYYY)	Type	Denomination (in LBP)	Quantity	Value (in LBP)	Minister
Anniversary of the Establishment of LibanPost and its Commitment to Postal Services in Lebanon	24/11/2008	Commemorative	1,750	50000	87,500,000	Gebran Bassil
Anniversary of the Establishment of LibanPost and its Commitment to Postal Services in Lebanon	24/11/2008	Commemorative	3,000	20000	60,000,000	Gebran Bassil
Honoring the Sacrifices of the Lebanese Army in the Battle of Nahr al-Bared	30/07/2008	Commemorative	1,000	200000	200,000,000	Gebran Bassil
Honoring the Sacrifices of the Lebanese Army in the Battle of Nahr al-Bared	30/07/2008	Commemorative	1,250	200000	250,000,000	Gebran Bassil
Honoring the Sacrifices of the Lebanese Army in the Battle of Nahr al-Bared	30/07/2008	Commemorative	1,750	200000	350,000,000	Gebran Bassil
Honoring the Sacrifices of the Lebanese Army in the Battle of Nahr al-Bared	30/07/2008	Commemorative	4,500	20000	90,000,000	Gebran Bassil
Honoring the Sacrifices of the Lebanese Army in the Battle of Nahr al-Bared	30/07/2008	Commemorative	500	200000	100,000,000	Gebran Bassil
Arab Postal Day	30/07/2008	Commemorative	10,000	20000	200,000,000	Gebran Bassil
125th Anniversary of the Birth of Gibran Khalil Gibran	29/04/2008	Commemorative	100	100000	10,000,000	Gebran Bassil
125th Anniversary of the Birth of Gibran Khalil Gibran	29/04/2008	Commemorative	500	100000	50,000,000	Gebran Bassil
125th Anniversary of the Birth of Gibran Khalil Gibran	29/04/2008	Commemorative	1,400	100000	140,000,000	Gebran Bassil
125th Anniversary of the Birth of Gibran Khalil Gibran	29/04/2008	Commemorative	2,000	100000	200,000,000	Gebran Bassil
125th Anniversary of the Birth of Gibran Khalil Gibran	29/04/2008	Commemorative	4,000	20000	80,000,000	Gebran Bassil
Annual Conference of Rotary District 2450 in Lebanon between May 1 and 4, 2008	29/04/2008	Commemorative	2,000	200000	400,000,000	Gebran Bassil
30th Anniversary of the Establishment of the OPEC International Development Fund	21/06/2007	Commemorative	1,400	500000	700,000,000	Marwan Haddad
UN Declaration of 2005 as the International Year of Sport and Physical Education	21/06/2007	Commemorative	500	500000	250,000,000	Marwan Haddad
Second Phase of the World Summit on the Information Society (Tunis, 2005)	21/06/2007	Commemorative	100	500000	50,000,000	Marwan Haddad

Subject	Date (DD/MM/YYYY)	Type	Denomination (in LBP)	Quantity	Value (in LBP)	Minister
Honoring Lebanese Maxim Cha'ya, who raised the Lebanese flag on Mount Everest	21/06/2007	Commemorative	3,000	20000	60,000,000	Marwan Haddad
Memorial for the Return of Released Prisoners on 29/1/2004	21/06/2007	Commemorative	5,000	20000	100,000,000	Marwan Haddad
Centennial Anniversary of the Birth of Leopold Sedar Senghor	21/06/2007	Commemorative	300	250000	75,000,000	Marwan Haddad
Image of the painting by the artist Dr. Nizar Daher, acquired by the Hermitage Museum in St. Petersburg, Russia, in 2003, titled "Hills"	21/06/2007	Commemorative	5,000	250000	1,250,000,000	Marwan Haddad
50th Anniversary of the Baalbeck International Festivals	21/06/2007	Commemorative	1,000	300000	300,000,000	Marwan Haddad
50th Anniversary of the Baalbeck International Festivals	21/06/2007	Commemorative	5,000	300000	1,500,000,000	Marwan Haddad
125th Anniversary of the Establishment of the Islamic Objectives Association in Sidon	21/06/2007	Commemorative	1,400	250000	350,000,000	Marwan Haddad
125th Anniversary of the Establishment of the Islamic Objectives Association in Sidon	21/06/2007	Commemorative	1,750	250000	437,500,000	Marwan Haddad
125th Anniversary of the Establishment of the Islamic Objectives Association in Sidon	21/06/2007	Commemorative	250	125000	31,250,000	Marwan Haddad
125th Anniversary of the Establishment of the Islamic Objectives Association in Sidon	21/06/2007	Commemorative	500	125000	62,500,000	Marwan Haddad
125th Anniversary of the Establishment of the Islamic Objectives Association in Sidon	21/06/2007	Commemorative	1,400	125000	175,000,000	Marwan Haddad
125th Anniversary of the Establishment of the Islamic Objectives Association in Sidon	21/06/2007	Commemorative	1,750	125000	218,750,000	Marwan Haddad
Memorial for President Fu'ad Chehab	28/05/2007	Commemorative	1,400	200000	280,000,000	Marwan Haddad
Memorial for the Martyr Minister Bassel Fleihan	13/04/2007	Commemorative	500	50000	25,000,000	Marwan Haddad

Subject	Date (DD/MM/YYYY)	Type	Denomination (in LBP)	Quantity	Value (in LBP)	Minister
Memorial for the Martyr Minister Bassel Fleihan	13/04/2007	Commemorative	1,500	50000	75,000,000	Marwan Haddad
Memorial for the Martyr Minister Bassel Fleihan	13/04/2007	Commemorative	2,000	50000	100,000,000	Marwan Haddad
Memorial for the Martyr Minister Bassel Fleihan	13/04/2007	Commemorative	4,000	20000	80,000,000	Marwan Haddad
Arab Book Fair	13/04/2007	Commemorative	1,000	200000	200,000,000	Marwan Haddad
Memorial for the Martyr President Rafiq Hariri on February 14, 2005	02/02/2006	Commemorative	1,250	300000	375,000,000	Marwan Haddad
Memorial for the Martyr President Rafiq Hariri on February 14, 2006	02/02/2006	Commemorative	1,250	300000	375,000,000	Marwan Haddad
Memorial for the Martyr President Rafiq Hariri on February 14, 2007	02/02/2006	Commemorative	1,750	300000	525,000,000	Marwan Haddad
Memorial for the Martyr President Rafiq Hariri on February 14, 2008	02/02/2006	Commemorative	1,750	300000	525,000,000	Marwan Haddad
Memorial for the Martyr President Rafiq Hariri on February 14, 2009	02/02/2006	Commemorative	6,000	100000	600,000,000	Marwan Haddad
Building of the Central Bank of Lebanon	01/11/2005	Regular	1,250	700000	875,000,000	Marwan Haddad
Baha' al-Din al-Hariri Mosque	01/11/2005	Regular	1,750	1000000	1,750,000,000	Marwan Haddad
St. Paul's Cathedral	01/11/2005	Regular	1,400	1000000	1,400,000,000	Marwan Haddad
Presidential Palace Building	01/11/2005	Regular	2,000	500000	1,000,000,000	Marwan Haddad
Parliament Building	01/11/2005	Regular	250	700000	175,000,000	Marwan Haddad
Camille Chamoun Sports City Building	06/10/2005	Regular	300	1300000	390,000,000	Marwan Haddad
Government Palace Building	06/10/2005	Regular	1,000	1300000	1,300,000,000	Marwan Haddad
National Museum Building	06/10/2005	Regular	500	1250000	625,000,000	Marwan Haddad
Rafiq Hariri International Airport Building	06/10/2005	Regular	100	1300000	130,000,000	Marwan Haddad
100th Anniversary of the Rotary International Club	04/02/2005	Commemorative	3,000	50000	150,000,000	Jean-Louis Qordahi
Cedars	11/11/2004	Regular	1,000	700000	700,000,000	Jean-Louis Qordahi
Laqlouq	11/11/2004	Regular	250	500000	125,000,000	Jean-Louis Qordahi
Baalbek Festivals	11/11/2004	Regular	500	500000	250,000,000	Jean-Louis Qordahi
Beit Ed-Dine Festivals	11/11/2004	Regular	1,400	500000	700,000,000	Jean-Louis Qordahi

Subject	Date (DD/MM/YYYY)	Type	Denomination (in LBP)	Quantity	Value (in LBP)	Minister
Byblos Festivals	11/11/2004	Regular	1,750	1000000	1,750,000,000	Jean-Louis Qordahi
Tyre Festivals	11/11/2004	Regular	1,250	750000	937,500,000	Jean-Louis Qordahi
Zahle	22/10/2004	Regular	300	500000	150,000,000	Jean-Louis Qordahi
Qammou'a	22/10/2004	Regular	100	500000	50,000,000	Jean-Louis Qordahi
125th Anniversary of the Saint George University Hospital	22/10/2004	Commemorative	3,000	50000	150,000,000	Jean-Louis Qordahi
'Youn El Siman	22/10/2004	Regular	100	500000	50,000,000	Jean-Louis Qordahi
Bakish Canal	22/10/2004	Regular	300	500000	150,000,000	Jean-Louis Qordahi
Lebanese International Music and Arts Festival - Al Bustan Festivals	04/03/2004	Regular	1,000	500000	500,000,000	Jean-Louis Qordahi
Rehabilitation of the Post and Telecommunications Building in Riyadh El Solh Area - After Rehabilitation	04/03/2004	Regular	300	700000	210,000,000	Jean-Louis Qordahi
Rehabilitation of the Post and Telecommunications Building in Riyadh El Solh Area - Before Rehabilitation	04/03/2004	Regular	100	700000	70,000,000	Jean-Louis Qordahi
Ski Centers in Lebanon - Faqra	04/03/2004	Regular	500	700000	350,000,000	Jean-Louis Qordahi
60th Anniversary of Independence in Lebanon	21/11/2003	Commemorative	1,250	50000	62,500,000	Jean-Louis Qordahi
60th Anniversary of Independence in Lebanon	21/11/2003	Commemorative	1,250	50000	62,500,000	Jean-Louis Qordahi
60th Anniversary of Independence in Lebanon	21/11/2003	Commemorative	1,750	50000	87,500,000	Jean-Louis Qordahi
60th Anniversary of Independence in Lebanon	21/11/2003	Commemorative	1,750	50000	87,500,000	Jean-Louis Qordahi
60th Anniversary of Independence in Lebanon	21/11/2003	Commemorative	6,000	10000	60,000,000	Jean-Louis Qordahi
Fossil Fish in Lebanon	13/11/2002	Regular	10,000	200000	2,000,000,000	Jean-Louis Qordahi
Old Market in Byblos	13/11/2002	Regular	500	1000000	500,000,000	Jean-Louis Qordahi
Old Market in Tripoli	13/11/2002	Regular	1,000	1500000	1,500,000,000	Jean-Louis Qordahi
Lebanese Amber	13/11/2002	Regular	5,000	200000	1,000,000,000	Jean-Louis Qordahi

Subject	Date (DD/MM/YYYY)	Type	Denomination (in LBP)	Quantity	Value (in LBP)	Minister
Bziza Antiquities	13/11/2002	Regular	1,100	1500000	1,650,000,000	Jean-Louis Qordahi
Aarqa Antiquities	13/11/2002	Regular	1,500	2000000	3,000,000,000	Jean-Louis Qordahi
Niha Antiquities	13/11/2002	Regular	2,000	200000	400,000,000	Jean-Louis Qordahi
Mseilha Castle	13/11/2002	Regular	3,000	200000	600,000,000	Jean-Louis Qordahi
Celebration of the 125th Anniversary of the Universal Postal Union	31/10/2002	Commemorative	2,000	100000	200,000,000	Jean-Louis Qordahi
Announcement of Beirut as the Cultural Capital of the Arab World for the Year 2009	31/10/2002	Commemorative	2,000	100000	200,000,000	Jean-Louis Qordahi
The Ninth Conference of Francophone Countries in October 2002 in Lebanon	18/10/2002	Commemorative	1,500	50000	75,000,000	Jean-Louis Qordahi
The Ninth Conference of Francophone Countries in October 2002 in Lebanon	18/10/2002	Commemorative	1,500	50000	75,000,000	Jean-Louis Qordahi
Commemoration of the Martyr Judges in the Palace of Justice (Sidon)	12/06/2002	Commemorative	3,000	50000	150,000,000	Jean-Louis Qordahi
Liberation Day - May 25	16/04/2002	Commemorative	1,100	20000	22,000,000	Jean-Louis Qordahi
Commemoration of the Arab Summit in Beirut in 2002	27/03/2002	Commemorative	2,000	50000	100,000,000	Jean-Louis Qordahi
Commemoration of the Arab Summit in Beirut in 2003	27/03/2002	Commemorative	3,000	50000	150,000,000	Jean-Louis Qordahi
Arab Women's Day	31/01/2002	Commemorative	1,000	100000	100,000,000	Jean-Louis Qordahi
Commemoration of Shammass Abdullah Zakher, the Inventor of the First Arabic Letterpress in Lebanon and the Arab World	01/08/2001	Commemorative	1,000	100000	100,000,000	Jean-Louis Qordahi
50th Anniversary of the Establishment of SOS Villages Worldwide and 30th Anniversary in Lebanon	01/08/2001	Commemorative	300	100000	30,000,000	Jean-Louis Qordahi
Saint Joseph University Celebrates the End of its 125 Years in Lebanon	01/08/2001	Commemorative	5,000	100000	500,000,000	Jean-Louis Qordahi
50th Anniversary of the Geneva Convention on the Red Cross on 12/8/2000	01/08/2001	Commemorative	500	150000	75,000,000	Jean-Louis Qordahi



Subject	Date (DD/MM/YYYY)	Type	Denomination (in LBP)	Quantity	Value (in LBP)	Minister
50th Anniversary of the Geneva Convention on the Red Cross on 12/8/2000	01/08/2001	Commemorative	1,100	150000	165,000,000	Jean-Louis Qordahi
50th Anniversary of the Geneva Convention on the Red Cross on 12/8/2000	01/08/2001	Commemorative	1,500	150000	225,000,000	Jean-Louis Qordahi
25th Anniversary of the Economic and Social Commission for Western Asia (ESCWA)	01/08/2001	Commemorative	10,000	100000	1,000,000,000	Jean-Louis Qordahi
Commemoration of the Poet Elias Abou Chabke	01/08/2001	Commemorative	1,500	100000	150,000,000	Jean-Louis Qordahi
Lebanese Prisoners in Israeli Prisons	10/07/2001	Commemorative	500	500000	250,000,000	Jean-Louis Qordahi
Commemoration of Engineer Ibrahim Abdel Aal	04/07/2001	Commemorative	1,000	300000	300,000,000	Jean-Louis Qordahi
The Resistance Fighter	16/05/2001	Commemorative	1,100	500000	550,000,000	Jean-Louis Qordahi
Reconstruction	14/08/1999	Regular	5,000	50000	250,000,000	Issam Naman
Arab University	14/08/1999	Regular	2,000	400000	800,000,000	Issam Naman
President Rene Mouawad	14/08/1999	Regular	3,000	250000	750,000,000	Issam Naman
His Holiness the Pope	14/08/1999	Regular	10,000	50000	500,000,000	Issam Naman
Martyrs' Day	14/08/1999	Regular	1,500	780000	1,170,000,000	Issam Naman
Old Stamps Overprinted for Use (Originally 50, 70, and 75 Lebanese Pounds, with new prices printed over them)	24/12/1998	Regular	100	400000	40,000,000	Issam Naman
Old Stamps Overprinted for Use (Originally 50, 70, and 75 Lebanese Pounds, with new prices printed over them)	24/12/1998	Regular	300	400000	120,000,000	Issam Naman
Old Stamps Overprinted for Use (Originally 50, 70, and 75 Lebanese Pounds, with new prices printed over them)	24/12/1998	Regular	1,100	750000	825,000,000	Issam Naman

Source: *Information International*, based on officially published decisions issued by the mentioned ministers.

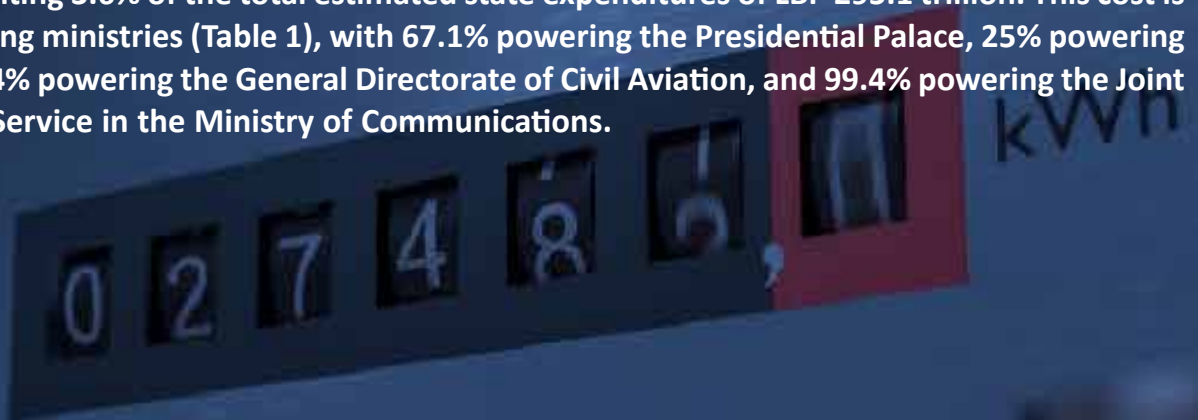
**Public Sector**

# GOVERNMENT STATE'S ELECTRICITY EXPENSES:

**4% OF TOTAL GOVERNMENT  
EXPENDITURES**

**99% USED BY MINISTRY OF  
TELECOMMUNICATIONS**

In a review of the major expenses in the 2024 budget bill, the cost of state produced electricity (excluding the cost of private generators, which have powered Lebanon for decades in lieu of the Lebanese government's inability, or refusal, to provide any utility services to inhabitants) is LBP 10.7 trillion, representing 3.6% of the total estimated state expenditures of LBP 295.1 trillion. This cost is distributed among ministries (Table 1), with 67.1% powering the Presidential Palace, 25% powering Parliament, 80.4% powering the General Directorate of Civil Aviation, and 99.4% powering the Joint Administrative Service in the Ministry of Communications.



Officials confess that these numbers were arbitrarily without justification for the inflated expenses. Undoubtedly, these costs have risen with the increase in electricity tariffs starting effective November 2022, and the newly adopted USD-LBP exchange rate-linked tariff.

**Table 1. Distribution of the estimated electricity cost of various governmental organizations (%).**

Organization	Total Expenses (in LBP Billion)	Electricity Expenditure (in LBP Billion)	Percentage of Electricity Expenditure from total Expenses
Ministry of Communications - Joint Administrative Service	1,928	1,917	99.40%
Military Courts	25.8	21.1	81.80%
General Directorate of Civil Aviation	1,872.70	1,505	80.40%
Presidency of the Council of Ministers (excluding its affiliated institutions and bodies)	1,010	752.3	74.50%
Ministry of Interior and Municipalities	100.2	72.2	72%
South Governorate	75.5	54.2	71.80%
North Governorate	35.2	24.1	68.50%
Presidency of the Republic	322.8	216.6	67.10%
Bekaa Governorate	14.1	9	63.80%
Fatwa Circles	43.5	27.1	62.20%
Radio Lebanon	183.5	108.3	59%
Akkar Governorate	9.4	5.4	57.40%
Ministry of Energy and Water - General Directorate of Investment	40.6	23	56.60%
Druze Spiritual Council	9.2	4.8	52.40%
Ministry of Information	151.5	74.5	49.20%
Supreme Shia Islamic Council	16.9	7.7	45.40%
Ministry of Youth and Sports	101.1	44.5	44%
Baalbek-Hermel Governorate	7.3	3	41%
Judicial Courts	751	300	40%
Nabatieh Governorate	10.6	4.1	38.70%
General Inspection in the Army	13.1	4.9	37.40%
Ministry of Communications - General Directorate of Postal Services	29.6	10.8	36.50%
Mount Lebanon Governorate	18.1	5.4	29.80%
General Directorate of Education	506.6	144.5	28.50%

Organization	Total Expenses (in LBP Billion)	Electricity Expenditure (in LBP Billion)	Percentage of Electricity Expenditure from total Expenses
General Directorate of Cooperatives in the Ministry of Agriculture	24.4	6.8	27.80%
Ministry of Culture - General Directorate of Culture	78.4	21.6	27.50%
Civil Service Council	39.6	10.8	27.30%
Court of Audit	75.3	20.3	27%
Parliament	1,199.60	300	25%
Ministry of Agriculture - Joint Administrative Service	396.7	84.3	21.20%
Ministry of Tourism	96.9	19.5	20.20%
Jaafari Court	14.7	2.9	19.60%
Central Statistical Administration	41.4	8.2	19.60%
Central Inspection	85.7	15.9	18.60%
Jaafari Shari'a Court	53	9.5	17.80%
Alawite Islamic Council	7.4	1.3	17.60%
Islamic Shari'a Courts	43.6	7.5	17.30%
Ministry of Industry	66.3	10.8	16.30%
Higher Disciplinary Authority	5.6	0.903	16.20%
General Directorate of Vocational and Technical Education	1,635.10	248.3	15.20%
Ministry of Labor	94.5	13.5	14.30%
Ministry of Energy and Water - General Directorate of Water and Electricity Resources	801.5	113.7	14.20%
Ministry of Culture - General Directorate of Antiquities	148.2	20	13.50%
Ministry of Finance - General Finance Directorate	2,440	325	13.30%
General Directorate of Oil	26.1	3.2	12.20%
General Directorate of Political and Refugee Affairs	25.5	2.8	11.10%
Druze Religious Council	14.7	1.6	11%
Ministry of Environment	61.1	6	9.80%
General Directorate of Civil Defense	200.9	17.3	8.60%
Ministry of the Displaced	37.1	3	8.30%
Druze Religious Courts	26.7	2.2	8.10%
General Directorate of State Security	1,766	140	7.90%

Organization	Total Expenses (in LBP Billion)	Electricity Expenditure (in LBP Billion)	Percentage of Electricity Expenditure from total Expenses
Ministry of Economy and Trade - General Directorate	97.2	7.5	7.70%
Ministry of Public Works and Transportation	6,626	461.4	6.90%
General Directorate of Real Estate Affairs	223	15.1	6.80%
General Directorate of Land and Maritime Transport	191	12	6.30%
Lebanese Army	48,228	2,708	5.60%
Customs Administration	1,707	67.7	4.80%
Constitutional Council	20	0.9	4.50%
General Directorate of Administration in the Army	234	8.1	3.50%
Ministry of Foreign Affairs and Expatriates - Central Administration	1,047	30.1	2.80%
General Directorate of Personal Status	116.8	2.4	2%
Internal Security Forces	21,401	421.2	1.96%
General Security	5,131	97.8	1.90%
Ministry of State for Administrative Development Affairs	1,052.30	19.5	1.80%
Ministry of Sports Affairs	5,503	10.8	0.79%
National Lottery Directorate	345	2.7	0.78%
Ministry of Public Health - General Directorate of Health	30,646	75.8	0.20%
General Directorate of Grains and Sugar Beets	1,325	2.2	0.16%

Source: *Information International*, based on the 2024 Budget Law project.

**Table 2. Distribution of the estimated electricity cost of various governmental organizations (%)**

Organization	Total Expenditure (Billion LBP)	Electricity Cost (Billion LBP)	Percentage of Electricity Cost from Total Expenditure
Higher Disciplinary Authority	5.6	0.903	16.20%
Constitutional Council	20	0.900	4.50%
Lebanese Army	48,228	2,708	5.60%
Ministry of Communications - Joint Administrative Service	1,928	1,917	99.40%
General Directorate of Civil Aviation	1,872.70	1,505	80.40%
Presidency of the Council of Ministers	1,010	752.3	74.50%
Ministry of Public Works and Transportation	6,626	461.4	6.90%
Internal Security Forces	21,401	421.2	1.96%

Organization	Total Expenditure (Billion LBP)	Electricity Cost (Billion LBP)	Percentage of Electricity Cost from Total Expenditure
Ministry of Finance - General Finance Directorate	2,440	325	13.30%
Judicial Courts	751	300	40.00%
Parliament	1,199.60	300	25.00%
General Directorate of Vocational and Technical Education	1,635.10	248.3	15.20%
Presidency of the Republic	322.8	216.6	67.10%
General Directorate of Education	506.6	144.5	28.50%
General Directorate of State Security	1,766	140	7.90%
Ministry of Energy and Water - General Directorate of Water and Electricity Resources	801.5	113.7	14.20%
Radio Lebanon	183.5	108.3	59.00%
General Security	5,131	97.8	1.90%
Ministry of Agriculture - Joint Administrative Service	396.7	84.3	21.20%
Ministry of Public Health - General Directorate of Health	30,646	75.8	0.20%
Ministry of Information	151.5	74.5	49.20%
Ministry of Interior and Municipalities	100.2	72.2	72.00%
Customs Administration	1,707	67.7	4.80%
South Governorate	75.5	54.2	71.80%
Ministry of Youth and Sports	101.1	44.5	44.00%
Ministry of Foreign Affairs and Expatriates - Central Administration	1,047	30.1	2.80%
Fatwa Department	43.5	27.1	62.20%
North Governorate	35.2	24.1	68.50%
Ministry of Energy and Water - General Directorate of Investment	40.6	23	56.60%
Ministry of Culture - General Directorate of Culture	78.4	21.6	27.50%
Military Courts	25.8	21.1	81.80%
Court of Audit	75.3	20.3	27.00%
Ministry of Culture - General Directorate of Antiquities	148.2	20	13.50%
Ministry of Tourism	96.9	19.5	20.20%
Ministry of State for Administrative Development Affairs	1,052.30	19.5	1.80%
General Directorate of Civil Defense	200.9	17.3	8.60%
Central Inspection	85.7	15.9	18.60%
General Directorate of Real Estate Affairs	223	15.1	6.80%

Organization	Total Expenditure (Billion LBP)	Electricity Cost (Billion LBP)	Percentage of Electricity Cost from Total Expenditure
Ministry of Labor	94.5	13.5	14.30%
General Directorate of Land and Maritime Transport	191	12	6.30%
Ministry of Communications - General Directorate of Postal Services	29.6	10.8	36.50%
Civil Service Council	39.6	10.8	27.30%
Ministry of Industry	66.3	10.8	16.30%
Ministry of Sports Affairs	5,503	10.8	0.79%
Jaafari Sharia Courts	53	9.5	17.80%
Bekaa Governorate	14.1	9	63.80%
Central Statistical Administration	41.4	8.2	19.60%
General Directorate of Administration in the Army	234	8.1	3.50%
Higher Shia Islamic Council	16.9	7.7	45.40%
Islamic Sharia Courts	43.6	7.5	17.30%
Ministry of Economy and Trade - General Directorate	97.2	7.5	7.70%
General Directorate of Cooperatives in the Ministry of Agriculture	24.4	6.8	27.80%
Ministry of Environment	61.1	6	9.80%
Akkar Governorate	9.4	5.4	57.40%
Mount Lebanon Governorate	18.1	5.4	29.80%
General Inspection in the Army	13.1	4.9	37.40%
Druze Spiritual Council	9.2	4.8	52.40%
Nabatieh Governorate	10.6	4.1	38.70%
General Directorate of Oil	26.1	3.2	12.20%
Baalbek-Hermel Governorate	7.3	3	41.00%
Ministry of the Displaced	37.1	3	8.30%
Jaafari Fatwa	14.7	2.9	19.60%
General Directorate of Political and Refugee Affairs	25.5	2.8	11.10%
National Lottery Directorate	345	2.7	0.78%
General Directorate of Personal Status	116.8	2.4	2.00%
Druze Religious Courts	26.7	2.2	8.10%
General Directorate of Grains and Sugar Beets	1,325	2.2	0.16%
Druze Religious Council	14.7	1.6	11.00%
Alawite Islamic Council	7.4	1.3	17.60%

Source: *Information International*, based on the 2024 Budget Law project.

# THE HUNDREDFOLD SURGE:

## A COMPREHENSIVE ANALYSIS OF THE INCREASE IN OVERTIME WAGES AND CUSTOMS SERVICE FEES (2019-2023)

The Supreme Customs Council recently issued Decision No. 350/2023 mandating the increase of overtime wages and customs service fees. This is the third fee increase since 2019. Concurrently, additional wages for customs employees were increased by anywhere from 22 to 33-fold. Customs service fees were increased by 100 times what they were in 2019.

الجمارك اللبنانية

خروج سيارات عامة

خروج سيارات  
ساحلية رخصة وراحتات



## Customs Service Fees

The multiplication of customs service fees varied, reaching multiples as high as 36 times the fees applied in 2021 and 100 times the fees of 2019. For instance, the fee for temporary declarations, which was set at LBP 20,000 in 2019, increased to LBP 55,000 in 2021, and reached LBP 2 million in 2023.

There are also service fees related to the value of goods, where the values are divided into categories, and a specific fee is imposed for each category. These categories were also adjusted, and fees were modified accordingly. The temporary import license for vehicles was increased from LBP 50,000 to LBP 300,000 and recently set at LBP 3 million.

Fees were determined for each export and re-export declaration based on the value of the exported goods.

**Table 1. Evolution of service fees from 2019 to 2023 (LBP).**

Fee Description	Previous Fee 2020 (Decision 6/2020)	Previous Fee 2021 (Decision 79, on July 1, 2021)	New Fee 2023 (Decision 350/2023)
For each declaration with a value up to 5 million	,	130,000	2 million for declarations up to 900 million
For each declaration valued between 5 and 50 million	90,000	240,000	4 million for declarations between 900 million and 2.5 billion
For each declaration valued between 50 and 100 million	120,000	320,000	6 million for declarations between 2.5 and 4.5 billion
For each declaration valued over 100 million and for household furniture declarations regardless of value	150,000	400,000	7.5 million for declarations over 4.5 billion
For each declaration of temporary admission	20,000	55,000	1 million for each declaration of temporary admission, and for each request for entry into the free zone, re-export request, and fee settlement
For each temporary import license for cars	50,000	300,000	3 million for each temporary import license for cars, traffic logs, and temporary residence when issued
For each temporary import license for yachts for tourism	200,000	1 million	15 million for each temporary import license for yachts for tourism and 10 million for each passenger list
			1 million for each export and re-export declaration with a value of 900 million or less.
			2 million for each export and re-export declaration with a value between 900 million and 2.5 billion.

Fee Description	Previous Fee 2020 (Decision 6/2020)	Previous Fee 2021 (Decision 79, on July 1, 2021)	New Fee 2023 (Decision 350/2023)
			3 million for each export and re-export declaration with a value between 2.5 and 4.5 billion.
			4 million for each export and re-export declaration with a value between 4.5 and 9 billion.
			5 million for each export and re-export declaration with a value exceeding 9 billion.

Source: Information International, based on decisions issued by the Supreme Customs Council.

## Overtime Wages for Employees

In response to the increase in service fees, the Supreme Customs Council raised overtime wages. According to the same decision, these wages allocated for customs employees were increased by multiples ranging from 22 to 33 times compared to the year 2019, and 5 to 6 times compared to the year 2022.

These wages are determined on an hourly basis for overtime work. Daytime work is calculated from 7:00 AM to 7:00 PM, while nighttime work is from 7:00 PM to 7:00 AM the next day, with any part of an hour considered as a full hour.

For example, the hourly wage rates for employees in the fifth category and customs officers were set at LBP 18,000 in the daytime and LBP 27,000 at night in 2020. These rates were raised to 75,000 in the daytime and 125,000 at night before reaching 400,000 per hour in the daytime and 600,000 per hour at night in the recent decision.



**Table 2. Increase in hourly wage rates (All amounts in LBP) Bottom of Form.**

Hourly Wage Rates by Category/Year	2019/2020	2021	2022	2023
Second Category Employees	30,000 daytime 45,000 nighttime	80,000 daytime 120,000 nighttime	200,000 daytime 300,000 nighttime	1 million daytime 1.5 million nighttime
Third Category Employees	26,000 daytime 39,000 nighttime	70,000 daytime 105,000 nighttime	150,000 daytime 225,000 nighttime	800,000 daytime 1.2 million nighttime
Fourth Category Employees	20,000 daytime 30,000 nighttime	55,000 daytime 83,000 nighttime	100,000 daytime 150,000 nighttime	600,000 daytime 800,000 nighttime
Fifth Category and Customs Officers	18,000 daytime 27,000 nighttime	50,000 daytime 75,000 nighttime	75,000 daytime 125,000 nighttime	400,000 daytime 600,000 nighttime

Source: *Information International*, based on decisions issued by the Supreme Customs Council.

## Legal Overview

The fees are determined by the Supreme Customs Council under Chapter Four of the Customs Law issued by Decree No. 4461, dated December 15, 2000, and its amendments (Customs Law). Particularly, Article 330 of the Customs Law stipulates that, based on decisions from the Supreme Customs Council, after consulting the Director-General of Customs, the following wages and fees are determined:

- Wages for activities carried out for the account of concerned parties outside the hours and locations specified in customs regulations, as well as the wages of customs officials responsible for organizing data of concerned parties in locations where licensed customs brokers are not available.
- Fees for other customs services provided by customs officials during import, export, transit situations, and re-export, as well as during the examination of travelers' luggage.
- Principles for the distribution of collected amounts.



# THE RISE OF CIVIL SOCIETIES AMID LEBANON'S DOWNTURN

**315 NEW CIVIL SOCIETY  
ORGANIZATIONS (CSO)  
IN 10 MONTHS:**

**AN AVERAGE OF 1 PER DAY**

Everything in Lebanon is in a state of stagnation or decline, except for the establishment of CSOs, which are in a state of "revival". No one can explain this phenomenon. The needs are many and significant, but the majority of existing CSOs are incapable of doing anything. The creation of new CSOs does not solve the problems faced by the Lebanese people, as these CSOs, or the majority of them, become an additional surplus. Some consider these CSOs to have turned into a means of collecting local and foreign funds and donations, becoming a gateway to the prominent aspects of Lebanese social life.

## Objectives of the CSOs

Upon reviewing the data from the Factual Attestations of these CSOs, it is evident that they are similar in their areas of work. Examples include:

- Assisting the poor, sick, financially needy, and those need of moral support.
- Providing assistance and grants to students.
- Working to enhance solidarity and affection in society.
- Raising awareness among youth about harmful behaviors.
- Caring for the disabled and the elderly.
- Focusing on children, teenagers, and youth.
- Concern for environmental issues and combating desertification.
- Reducing illiteracy.
- Combating unemployment and providing job opportunities.
- Instilling the concept of community service in the minds of young people.
- Training young people in project leadership and management skills and resolving conflicts through constructive dialogue.
- Implementing developmental projects in education, culture, social, health, and environmental fields.
- Advocating for women’s rights, supporting them, and striving for their full participation in all fields.
- Creating innovative, long-term solutions to meet the needs of society.
- Supporting marginalized individuals and encouraging their role in society.

## In Numbers

The number of CSOs registered with the Ministry of Interior and Municipalities, as reported by Factual Attestations has reached 315 CSOs from the beginning of the current year until the end of October. This indicates an average of one new CSO established per day. According to the data, the highest number of new CSOs was in June, at 54 CSOs, while the lowest was in August, at 10 CSOs.

**Table 1: Number of CSOs established monthly according to data from Factual Attestations.**

Month	Number of CSOs
January	45
February	255
March	46
April	28
May	17
June	54
July	23
August	10
September	37
October	30
<b>Total</b>	<b>315</b>

Source: *Information International*, based on numbers provided by the National Gazette.

CSOs are distributed according to districts and governorates. According to the data from Factual Attestations, CSOs have established 309 headquarters in Lebanese cities and towns, and they have the capacity to operate in all Lebanese regions. The largest number is present in Beirut, at a total of 58 CSOs, while the lowest number was in the Jezzine district, which did not witness the establishment of any CSO during the period covered by this study.

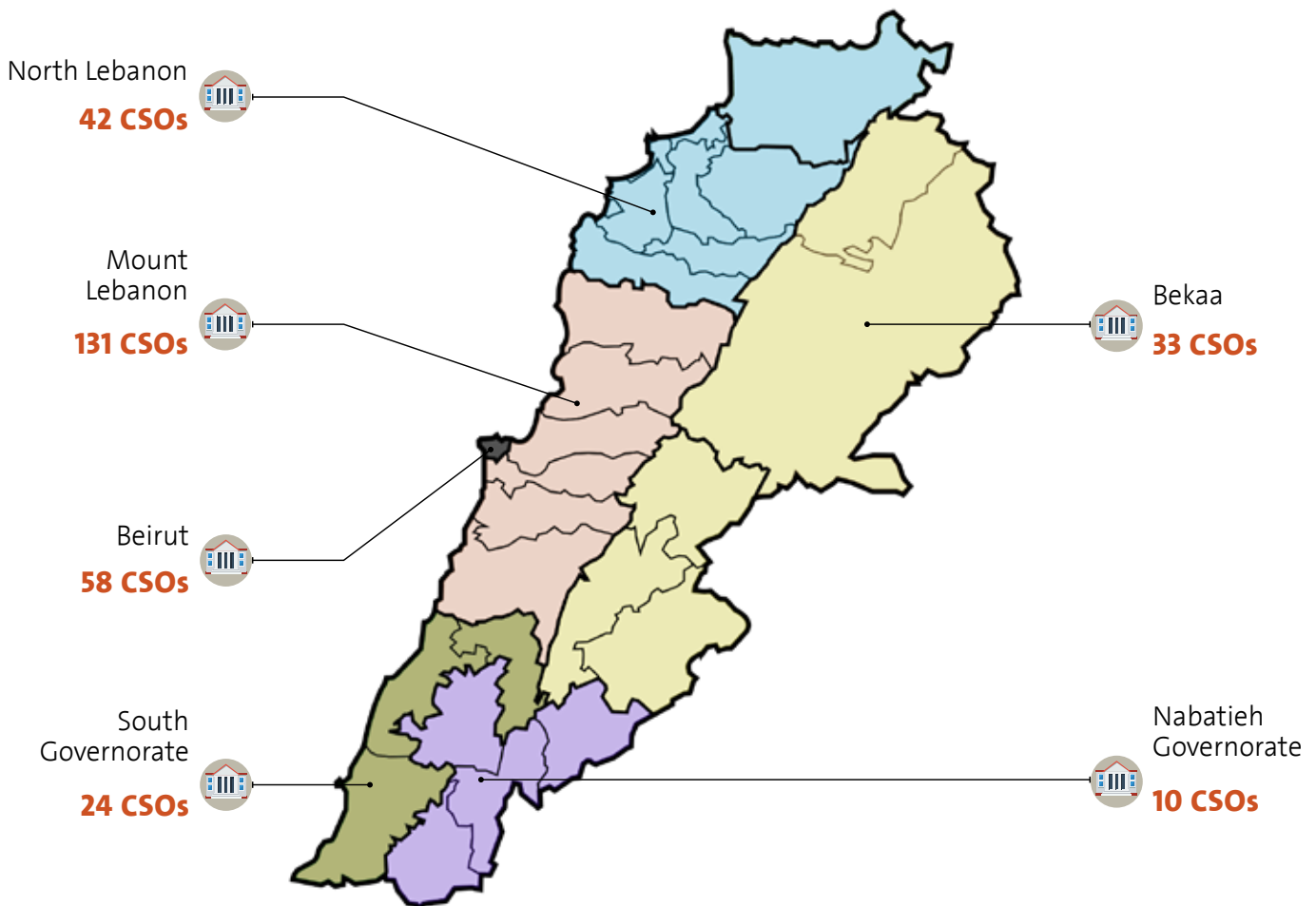
Additionally, the creation of one CSO was recorded in each of the districts of Bsharri, Rashaya, Hermel, Bint Jbeil, and Marjayoun. Mount Lebanon Governorate took the lead with the establishment of 131 CSOs.

**Table 2: Distribution of CSOs by Districts and Governorates according to data from Factual Attestations.**

District/Governorate	Number of CSOs
Beirut	58
Chouf	19
Aley	15
Baabda	39
Matn	36
Kesrouan	15
Jbeil	7
<b>Total Mount Lebanon</b>	<b>131</b>
Akkar	16
Tripoli	20
Minieh-Danniyeh	6
Zgharta	3
Koura	8
Batroun	4
Bsharri	1
<b>Total North Lebanon</b>	<b>42</b>
Zahle	12
West Bekaa	8
Rashaya	2
Baalbek	10
Hermel	1
<b>Total Bekaa</b>	<b>33</b>

District/Governorate	Number of CSOs
Sidon	11
Tyre	13
Jezzine	0
<b>Total South Governorate</b>	<b>24</b>
Nabatieh	4
Bint Jbeil	1
Marjayoun	1
Hasbaya	4
<b>Total Nabatieh Governorate</b>	<b>10</b>
<b>Overall Total</b>	<b>315</b>

Source: *Information International*, based on numbers provided by the National Gazette.





## **THE EFFECT OF COFFEE: FROM CONTEMPLATION TO ACTION & BENEFITS OF EXERCISE ON THE BRAIN**

Dr. Mirna Sabra

For those who can't start their day without a cup of coffee, a scientific perspective sheds light on our morning addiction to this beverage.

Researchers have highlighted the impact of coffee on the DMN, or Default Mode Network in our brains.

This network consists of a set of brain regions that regulate moments of wakeful rest, mind-wandering, and meditation. It is active when a person is not focused on the external world.

When we drink coffee, this network quiets down, reducing our inclination towards daydreaming. Our attention becomes more focused on tangible tasks and the surrounding environment.

In other words, coffee transitions us from a meditative state to an active state of work. Therefore, it is essential to find a balance in coffee consumption. Meditation also has its benefits.

Consuming too much coffee may undermine those precious moments when the mind wanders freely, often a source of inspiration and innovation.

*Source: Cerveau & Psycho, No. 159*





# **BENEFITS OF EXERCISE ON THE BRAIN**

Five key points reveal the extent of the benefits of exercise on our brains:

## **1. Increased Gray Matter:**

Regular physical activity stimulates not only our muscles but also our gray matter. Studies show an increase in gray matter in key areas such as the cortex and hippocampus, enhancing cognitive functions and memory.

## **2. Neurogenesis:**

Exercise doesn't just strengthen existing nerve cells; it creates new ones! Exercise promotes the formation of new nerve cells, especially in the hippocampus, a vital area for learning and memory.

## **3. Improved Brain Region Connectivity:**

Exercise enhances connections between different brain regions, leading to increased efficiency and faster information processing.

## **4. Formation of New Blood Vessels:**

Physical exercises stimulate the formation of blood vessels, creating new ones in the brain. This results in better oxygen delivery and optimal nourishment for brain cells.

## **5. Functional Changes:**

Exercise induces functional changes in the brain associated with improved concentration, enhanced cognitive functions, and a reduction in stress. It is also linked to a decreased risk of mental disorders such as depression and anxiety.

Physical activity contributes to good brain health across all ages. Moreover, it inevitably delays the onset of neurodegenerative diseases, significantly reducing the risk of chronic diseases of this nature.

Regular physical activity in patients suffering from Alzheimer's or Parkinson's disease can also enhance the therapeutic effects of treatments, providing additional benefits to overall health.

*Reference: Cerveau & Psycho, No. 86*



## ZABBOUGHA IN THE METN REGION: IT'S REAL

In one of the plays written by the Rahbani brothers, *Al-Mahatta (The Station)*, there is a musical sketch in which a singer requests a ticket in the name of “Thomas Pio from Zabbougha, whose mother is from Texas.” Zabbougha is a real town located in the Metn district.

### Etymology

There are several possibilities for the origin of the name. Anis Freiha mentions in his book *Names of Lebanese Cities and Villages* that there is no trace of the root s-b-gh. The name is either non-Semitic or a modification of sabbūkha, meaning a dense place with trees, or from the root s-b- indicating satiety, the number seven, or an oath.

The town of Zabbougha is located in the Metn district, 40 km away from the capital Beirut. It extends over an area of 280 hectares and is situated at an elevation of 1000 meters above sea level. It can be reached via the Batroun-Kfar Aqab road.

### Population and Housing

The estimated number of registered residents in Zabbougha is around 780 people, with 80% belonging to the Maronite sect and 20% to the Roman Catholic sect. The town has 113 dwellings.

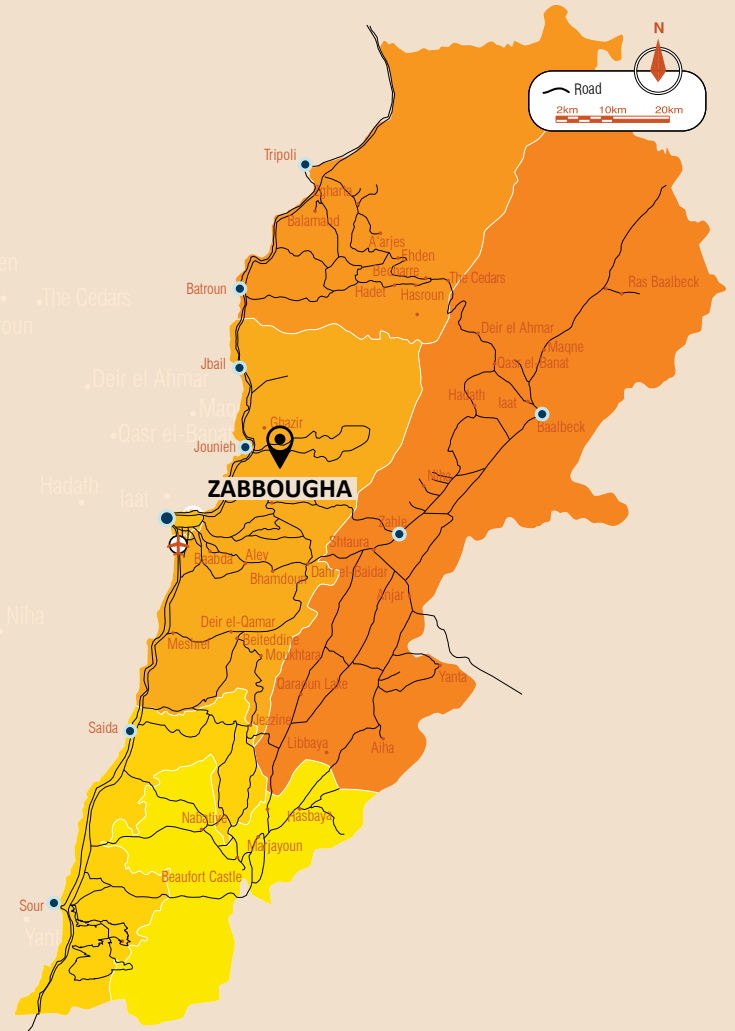
### Voters

The number of registered voters in the year 2000 was 513, with 300 casting their votes. In 2009, the number increased to 610 registered voters, with 382 casting their votes. In 2018, it reached 637 registered voters, with 337 casting their votes. In 2022, the number rose to 657 registered voters, with 332 casting their votes.

Voters are distributed among the following families:

#### Maronites: 524 voters

- Karbaj: 136 voters
- Zghaib: 92 voters
- Karam: 88 voters
- Hiba: 62 voters
- Khoury: 44 voters
- Rizkallah: 35 voters
- Qai: 31 voters
- Jideon: 26 voters
- Other smaller families: Darwish, Rashed, Arsanios



#### Roman Catholics: 133 voters

- Maalouf: 70 voters
- Qasouf: 53 voters
- Other smaller families: Dakroub, Skaf

### Local Authorities

The town lacks a municipal council, and its local authorities are limited to a single headman and an elective council of 3 members.

## THE MARONITE AND SHI'A SHABSHOUL FAMILIES

The word Shabshoul in Arabic supposedly means a person who wears untidy clothes or someone who is inappropriate or lacks respect. Shabshoul is also the name of Lebanese families.

### Origin

According to accounts of the origin of this family, they are of Palestinian origin and came to Lebanon in the early 20th century. They initially settled in Baalbek, converted from the Sunni sect to the Shi'a sect, and later moved to other areas. Some members who moved to the regions of Zgharta and Bsharri embraced the Maronite sect and abandoned the Shi'a sect.

### Members

The number of Shabshoul family members is 91 individuals, distributed according to their sects and constraints in the regions as follows:

#### **Maronites, numbering 53 individuals:**

Baslouqit (Zgharta): 31 individuals

Bsharri: 22 individuals

#### **Shi'a, numbering 38 individuals:**

Baalbek: 18 individuals

Ali Al-Nahri (Zahle): 6 individuals

Hermel: 5 individuals

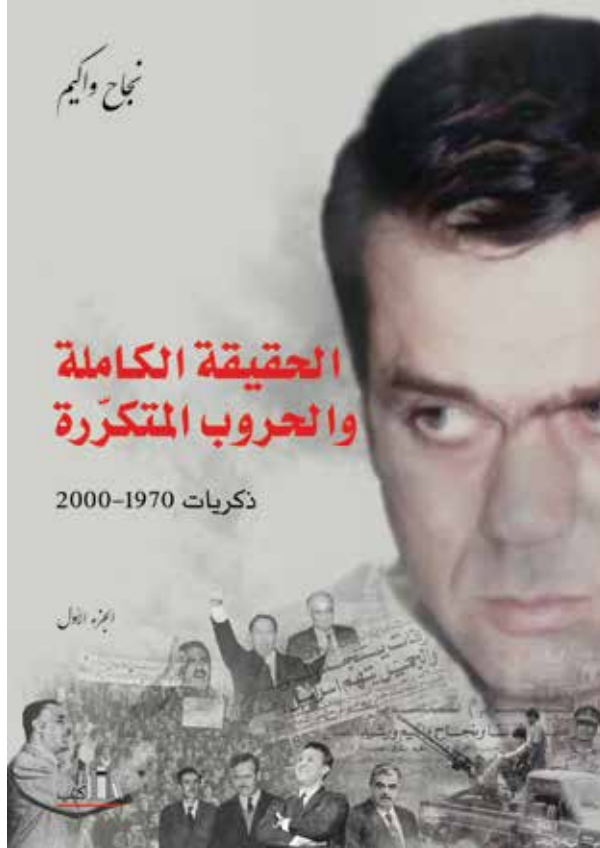
Burj Al-Barajneh: 3 individuals

They also moved to other areas, with two individuals in each of these areas.

# ***THE FULL TRUTH & THE RECURRING WARS***

MEMORIES FROM 1970-2000

Recently, *Kutub Publishing house* released a new book in Arabic, by former deputy Najah Wakim, titled *Al-Haqiqi al-Kamila wal-Hurub al-Mutakarrira, zekrayat 1970-2000 (The Full Truth and the Recurring Wars – Memories from 1970-2000)*, and it is the first volume in a series. The book contains 280 pages in medium format with introductions by Nazih Abu Afsh, Ghassan Matar, and Saad Mehyo. The author's forward immerses the reader in the heart of the subject. Although the memories conveyed are personal, they do belong to the wider audience. The former deputy follows a clearly defined intellectual and political path that is supported by his convictions and belief- during one of the most critical periods in Lebanon's history.



**Kutub, All Rights Reserved**

Al-Borj Building, 4th Floor Martyr's Square, Commercial Center

Beirut - Lebanon, P.O.BOX: 11-4353 Beirut, Lebanon

Tel: (961-1) 983008/9 Fax: (961-1) 980630

Web: [www.kutubltd.com](http://www.kutubltd.com)

E-mail: [kutub@kutubltd.com](mailto:kutub@kutubltd.com)