

- VOTER REGISTRATION TRANSFER PRIOR TO PARLIAMENTARY ELECTIONS
- 2011 REPORT OF THE CIVIL SERVICE BOARD
- “THE MONTHLY” INTERVIEWS FATIMA SHARAFEDDINE

LEBANON'S 2013 ELECTIONS

DRAFT LAW AND ELECTIONS
IN LIMBO



4 **LEBANON'S 2013 ELECTIONS: DRAFT LAW AND ELECTIONS IN LIMBO**

9 VOTER REGISTRATION TRANSFER PRIOR TO PARLIAMENTARY ELECTIONS

11 2011 REPORT OF THE CIVIL SERVICE BOARD

15 PHONE BILLS WORTH LBP 16 BILLION DUE ON THE SYRIAN FORCES IN LEBANON

16 THE 1972 LEBANESE PARLIAMENTARY ELECTIONS (3)

18 LEBANESE NATIONAL LOTTERY

19 SCREENING FOR CANCER: DR. HANNA SAADAH

20 PRE-WEDDING ANXIETY: DR. MICHEL NAWFAL

21 THE STATUS OF LEBANON'S RULE FROM 1861 UNTIL 2012 (2): SAID CHAAYA

22 INTERVIEW: FATIMA SHARAFEDDINE

24 WHERE DO WE GO NOW?

25 NOBEL PRIZES IN LITERATURE (1)

28 CARITAS LEBANON

30 POPULAR CULTURE

31 DEBUNKING MYTH #61: EXERCISE AND PHYSICAL ACTIVITY

32 MUST-READ BOOKS: WEAPONIZING ANTHROPOLOGY

33 MUST-READ CHILDREN'S BOOK: I AM NOT SLEEPY AND I WILL NOT GO TO BED

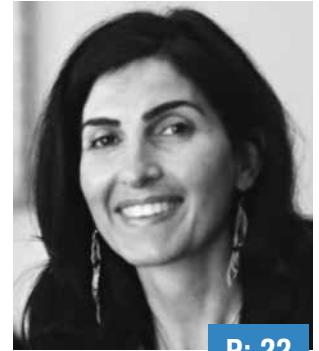
34 LEBANON FAMILIES: HASHISHO FAMILIES

35 DISCOVER LEBANON: AMMATOUR

36 CIVIL STRIFE INTRO (7)



P: 39



P: 22



P: 45

39 ADMINISTRATIVE DECENTRALIZATION

41 JULY 2012 HIGHLIGHTS

45 LIBYA'S ELECTIONS

47 REAL ESTATE PRICES IN LEBANON - JULY 2012

48 FOOD PRICES - JULY 2012

50 THE JEWISH DEMOGRAPHY AROUND THE WORLD

50 BEIRUT RAFIC HARIRI INTERNATIONAL AIRPORT - JULY 2012

51 LEBANON STATS